



Noleen Dunn
084 803 9972
noleendunn@dpg.co.za



Nicci Arnott
071 887 0870
nicciarnott@dpg.co.za

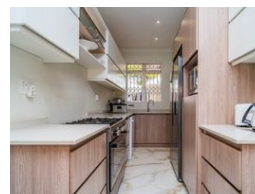
Contact Westville

031 2669091

Shop 1, Gordana Court,
22/26 Salisbury Avenue,
Westville



Web Ref DPR17499



R1,995,000

🛏️ 2 🚿 1 🚗 2

Monthly Bond Repayment R20,592.16
Calculated over 20 years at 11% with no deposit.

Transfer Costs R74,906.00 **Bond Costs** R32,760.00
These calculations are only a guide. Please ask your conveyancer for exact calculations.

Monthly Levy R2,950 **Monthly Rates** R1,697

ULTRA MODERN TOWNHOUSE

View by Appointment: Ideally situated in the sought after Cedar Ridge you will find this newly renovated simplex. The complex has 24 hour security and this unit features a private garden and is in close proximity to the communal pool.

As you enter you are welcomed by an open plan lounge and dining area that leads out onto a private garden area. There is also a covered patio where you can enjoy outdoor meals.

The kitchen is complete with sleek built in cupboards and ceaserstone counter tops.

Next to the entrance there is a door that leads to the courtyard where you will find washing lines and a wash trough.

Both the bedrooms are complete with built in cupboards while the main bedroom has door that leads out onto the covered patio.

The bathroom is ultra modern and is complete with a frameless glass shower.

This units comes...

Features

Pets Allowed	Yes			
Interior		Exterior		Sizes
Bedrooms	2	Garages	2	Floor Size
Bathrooms	1	Carports / Parkings	2	116m ²
Kitchens	1	Security	Yes	
Recep. Rooms	2	Pool	No	
Furnished	No	Views	True	

