

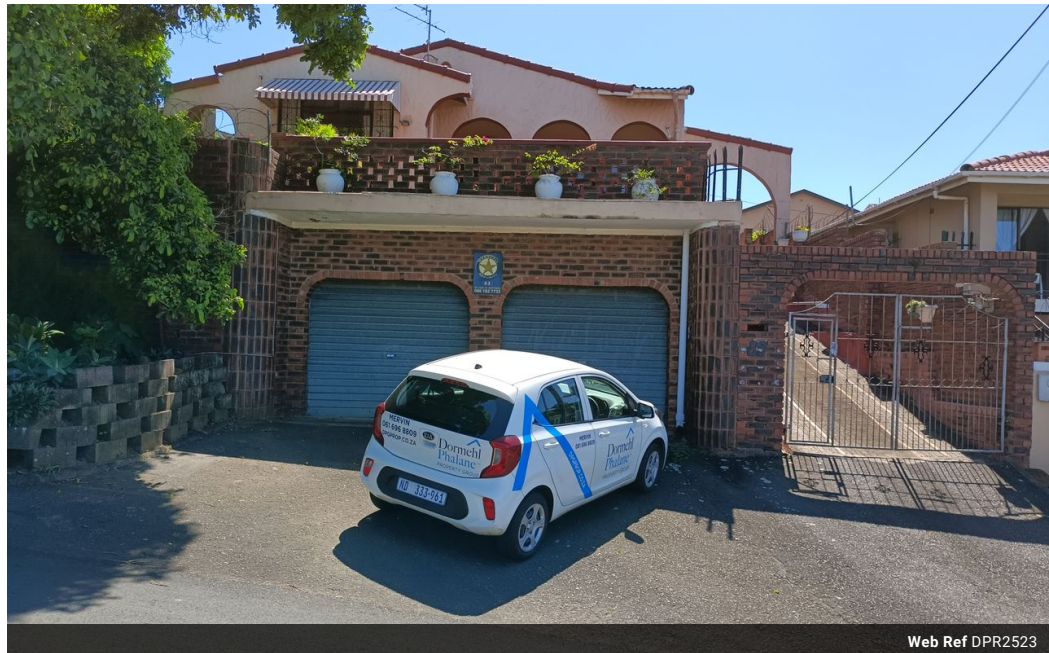


**Mervin Donnelly**  
061 696 8809  
mervin.d@dpg.co.za

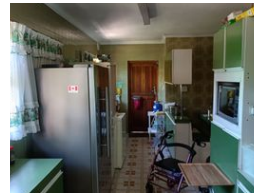
Contact Head Office - Dormehl Lite

012 0000000

1170 Moulton Avenue  
Waverley  
0184



Web Ref DPR2523



**R1,250,000**

4 Bedrooms 3 Bathrooms 2 Garages

**Monthly Bond Repayment** R12,902.35  
Calculated over 20 years at 11% with no deposit.

**Transfer Costs** R36,117.00    **Bond Costs** R27,105.00

These calculations are only a guide. Please ask your conveyancer for exact calculations.

**Monthly Rates** R900

**Spacious family home for sale in Effingham!!!**

Dormehl Phalane proudly presents this spacious family home for sale in Effingham. The property consists of:

- 3 Spacious bedrooms with fully fitted built in cupboards
- main bedroom has an ensuite
- family bathroom
- fully fitted kitchen with built in cupboards
- large lounge
- court yard
- double lock up garage
- ample parking space
- granny cottage one bedroom ,lounge,kitchen and bathroom

To view this property contact Mervin Donnelly

**Features**

**Interior**

Bedrooms 4  
Bathrooms 3  
Kitchens 2  
Recep. Rooms 2  
Furnished No

**Exterior**

Garages 2  
Security No  
Pool No  
Views False