

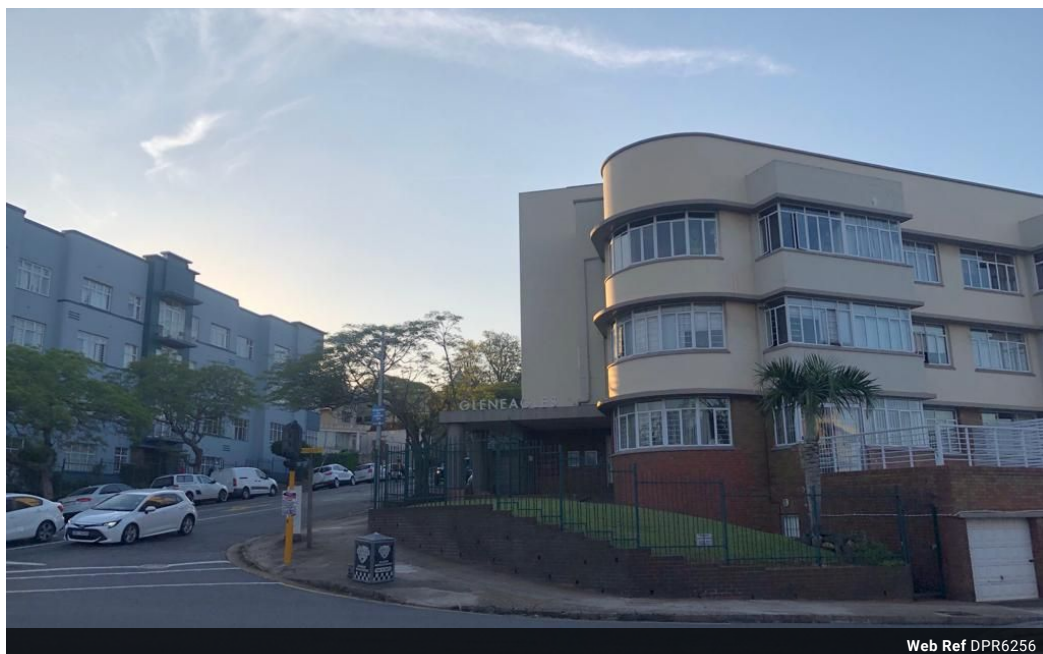


Stacy Fernandez
069 354 3613
stacy.f@dpg.co.za

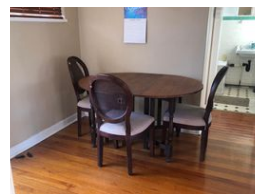
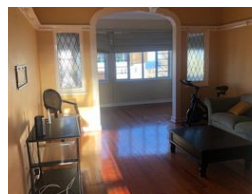
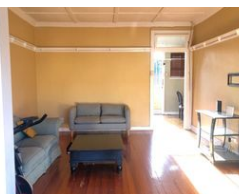
Contact Head Office - Dormehl Lite

012 0000000

1170 Moulton Avenue
Waverley
0184



Web Ref DPR6256



R930,000

1.5 1 1

Monthly Bond Repayment R9,599.35
Calculated over 20 years at 11% with no deposit.

Transfer Costs R30,412.00 **Bond Costs** R23,335.00

These calculations are only a guide. Please ask your conveyancer for exact calculations.

Monthly Levy R1,820 **Monthly Rates** R1,054

BEAUTIFUL ONE BEDROOM APARTMENT WITH STUNNING VIEWS!

Dormehl Phalane Property Group offers you this spacious one and a half bedroom apartment with stunning scenic views. This property has high ceilings and wooden flooring right through. It is fully fitted with spacious lounge and you can use the half bedroom for a dining or sun lounge. The kitchen is fitted and there is an entrance hall with a separate toilet and bathroom. This property is situated in Prime area in a well maintained complex it has a lock up garage. Close to all amenities.

Features

Interior		Exterior		Sizes	
Bedrooms	1.5	Garages	1	Floor Size	81m ²
Bathrooms	1	Security	No		
Kitchens	1	Pool	No		
Recep. Rooms	2	Views	True		
Furnished	No				