



Sma Hadebe
071 872 5511
sma.hadebe@dpg.co.za

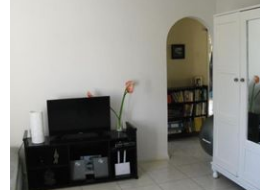
Contact **Musgrave**

031 3165402

279 Problem Mkhize Road,
Essenwood,
Durban,
4001



Web Ref DPR16396



R940,000

2 1.5

Monthly Bond Repayment R9,702.57
Calculated over 20 years at 11% with no deposit.

Transfer Costs R30,412.00 **Bond Costs** R23,335.00
These calculations are only a guide. Please ask your conveyancer for exact calculations.

Spacious, 2-bedroom flat(with parking) for sale in Morningside

Dormehl Phalane Musgrave presents an impeccably maintained, two-bedroom flat for sale in the heart of Morningside. It comes with two parking bays.

This beautiful flat boasts an open-plan kitchen with ample built-in cupboards. It has two, spacious bedrooms with built-in cupboards. There is a bathroom with a tub and hand shower, while the toilet is separate. A bonus is a small garden for relaxation.

This unit is close to Windermere mall, restaurants and transport routes. The property has secure, electric fencing. This flat is perfect for young professionals seeking style and accessibility, couples looking for a tranquil retreat, or investors seeking a valuable opportunity.

For further details, or to schedule a viewing, please contact Sma.

Features

Interior		Exterior		Sizes	
Bedrooms	2	Carports / Parkings	2	Floor Size	65m ²
Bathrooms	1.5	Security	No		
Kitchens	1	Pool	No		
Recep. Rooms	1	Views	False		
Furnished	No				