



**Nirvana Kasichand**  
073 895 3278  
nirvana.k@dpg.co.za

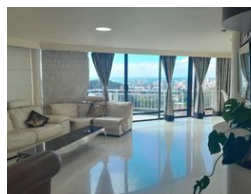
Contact **Musgrave**

**031 3165402**

279 Problem Mkhize Road,  
Essenwood,  
Durban,  
4001



Web Ref DPR4029



**R2,650,000**

3 2

**Monthly Bond Repayment** R27,352.99  
Calculated over 20 years at 11% with no deposit.

**Transfer Costs** R129,887.00 **Bond Costs** R40,300.00  
These calculations are only a guide. Please ask your conveyancer for exact calculations.

**Monthly Rates** R1,600 **Sectional Title Levy** R3,700

**Skye is the limit – 3-bedroom Musgrave flat for sale**

Dormehl Phalane Musgrave presents a great property for sale. The Skye is the limit with this spacious, three-bedroom flat, a corner unit in the attractive Skye complex in Peter Mokaba Ridge, Musgrave.

This 142m<sup>2</sup> unit is fully fitted, boasts a walk-in closet and also has a lovely wraparound verandah from all rooms and lounge.

There is loads of cupboard space, the flat is tiled throughout and there is a semi-open-plan kitchen as well as a storage room. Tenants have use of a communal pool, braai area and play area for children.

The property has 24-hour manned security and the unit for sale comes with two undercover parkings. Security bonuses include CCTV cameras and remote-controlled gates.

For further details, or to schedule a viewing, please contact Nirvana.

**Features**

Interior		Exterior		Sizes	
Bedrooms	3	Carports / Parkings	2	Floor Size	142m <sup>2</sup>
Bathrooms	2	Security	Yes		
Kitchens	1	Pool	Yes		
Recep. Rooms	2	Views	False		
Furnished	No				

