

Lindi Honey
082 444 8996
lindhoney@dpg.co.za

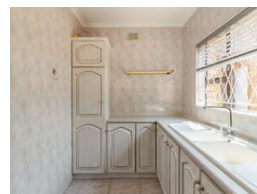
Contact Westville A-Team

031 2664343

1 Knightbridge,
16 Westville Road,
Westville



Web Ref DPR1549



R2,450,000

 3
  4
  2

Monthly Bond Repayment R25,288.62

Calculated over 20 years at 11% with no deposit.

Transfer Costs R111,720.00 **Bond Costs** R38,415.00

These calculations are only a guide. Please ask your conveyancer for exact calculations.

Monthly Rates R1,285

LOW MAINTENANCE FACEBRICK FAMILY HOME-PRICE IS NEGOTIABLE

This home is absolutely stunning in Reservoir Hills and is face brick and hence low maintenance. There is a beautiful landscaped garden and a sparkling pool with an entertainment area as well as a double motorised garage and plenty of guest parking. There is a separate sun room with shower facilities and a covered area for outside entertainment for those super warm summer days.

The main house comprises of three large bedrooms fitted with solid oak and beech wood cupboards, all with exquisitely done en- suites and air - conditioners. The kitchen is fully fitted with separate scullery all with solid oak cupboards and the scullery has a double sink.

The home flows beautifully to the lounge and dining room and has a fully fitted study, all fully air conditioned as well as a separate guest loo.

At the side of the property features a...

Features

| Pets Allowed | | Yes | | | |
|--------------|----|-----|--|---------------------|---------------------|
| Interior | | | | Exterior | |
| Bedrooms | 3 | | | Garages | 2 |
| Bathrooms | 4 | | | Carports / Parkings | 6 |
| Kitchens | 1 | | | Security | Yes |
| Recep. Rooms | 2 | | | Dom. Accom. | 1 |
| Furnished | No | | | Pool | No |
| | | | | Views | True |
| | | | | Sizes | |
| | | | | Land Size | 1,366m ² |