



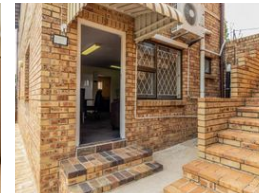
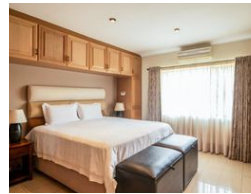
**Jenny Grant**  
082 655 2117  
jennygrant@dpg.co.za

Contact Westville  
**031 2669091**

Shop 1, Gordana Court,  
22/26 Salisbury Avenue,  
Westville



Web Ref DPR1679



**R2,450,000**

3 4 2

**Monthly Bond Repayment** R25,288.62  
Calculated over 20 years at 11% with no deposit.

**Transfer Costs** R111,720.00 **Bond Costs** R38,415.00  
These calculations are only a guide. Please ask your conveyancer for exact calculations.

**Monthly Rates** R1,300

**Absolutely Stunning Home with Two Granny Cottages!**

This well maintained family face brick home is in excellent condition and is looking for a new family. The kitchen has lovely built-in cupboards with an eye level oven and a separate scullery. The house has three bedrooms all with en-suites and air conditioners.

It features excellent security with cctv cameras, security beams and a burglar alarm system currently with armed response. It also features two outbuildings that could be used to supplement income.

Call today for a private viewing

**Features**

<b>Pets Allowed</b>	Yes		
<b>Interior</b>		<b>Exterior</b>	<b>Sizes</b>
Bedrooms	3	Garages	2
Bathrooms	4	Security	Yes
Kitchens	1	Dom. Accom.	1
Recep. Rooms	2	Pool	Yes
Studies	1	Views	True
Furnished	No		
			Land Size 1,366m <sup>2</sup>

