



Ningi Ngwenya
071 301 8200
ningingwenya@dpg.co.za

Contact Pinetown

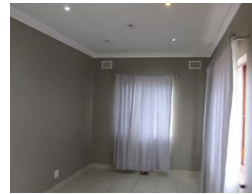
031 8229071

39 Glenugie Road
Pinetown



SOLE MANDATE

Web Ref DPR2259



R1,195,000

2 1

Monthly Bond Repayment R12,334.65
Calculated over 20 years at 11% with no deposit.

Transfer Costs R32,749.00 **Bond Costs** R25,220.00

These calculations are only a guide. Please ask your conveyancer for exact calculations.

Monthly Rates R600

PERFECTLY SITUATED WITH FULL GRANNY FLAT

A beautiful modern family home with bronze aluminium windows with spacious open plan settings, set on 544 sqm land, tiled throughout, perfectly fitted kitchen, all bedrooms fitted, open plan lounge dining set up. One bedroom granny flat with kitchenette, bathroom and lounge. Huge level land that can built another fully structured house. Burglar guarded, full electric fence with auto gates.

Features

Interior		Exterior		Sizes	
Bedrooms	2	Carports / Parkings	1	Land Size	544m ²
Bathrooms	1	Security	Yes		
Kitchens	1	Pool	No		
Recep. Rooms	1	Views	False		
Furnished	No				