



Anne Heyes
 083 9635330
 anneheyas@dpg.co.za

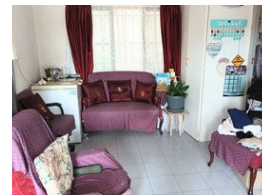
Contact Westville A-Team

031 2664343

1 Knightbridge,
 16 Westville Road,
 Westville



Web Ref DPR7143



R1,600,000

3 2 2

Monthly Bond Repayment R16,515.01
 Calculated over 20 years at 11% with no deposit.

Transfer Costs R48,785.00 **Bond Costs** R28,990.00

These calculations are only a guide. Please ask your conveyancer for exact calculations.

Monthly Rates R1,139

Elevated Beautiful Immaculate Home

3 Bedrooms, 2 Bathrooms, 2 lounges, huge big veranda leading to the lounge and front door.

Huge undercover patio.

The open plan granite kitchen offers lots of cupboard space and has a separate scullery area and is leading onto the dining room/

The property has one single garage.

At the back of the property there is a 2 bedroom, 1 bathroom, lounge, dining room and kitchen granny flat.

Call me now to view

Features

Pets Allowed Yes

Interior
 Bedrooms 3
 Bathrooms 2
 Kitchens 1
 Recep. Rooms 3
 Furnished No

Exterior
 Garages 2
 Carports / Parkings 4
 Security Yes
 Pool No
 Views True

Sizes
 Land Size 1,031m²