



Jenny Grant
082 655 2117
jennygrant@dpg.co.za



Sheri Minter
031 266 9091
sheriminter@dpg.co.za

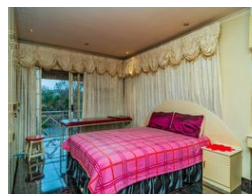
Contact Westville

031 2669091

Shop 1, Gordana Court,
22/26 Salisbury Avenue,
Westville



Web Ref DPR17545



R2,200,000

5 Bedrooms, 4 Bathrooms, 3 Carports

Monthly Bond Repayment R22,708.14
Calculated over 20 years at 11% with no deposit.

Transfer Costs R89,947.00 **Bond Costs** R34,625.00

These calculations are only a guide. Please ask your conveyancer for exact calculations.

Monthly Rates R2,200

PRIME RESERVOIR HILLS FAMILY HOME

Nestled in the sought-after area of Reservoir Hills, this property offers endless possibilities, whether you're seeking a spacious family home or a smart investment like the potential for a 10-bedroom student accommodation, ensuring excellent rental returns.

Key Features:

Generous Main House: This expansive home boasts 5 generously sized bedrooms, 2 inviting lounges, 4 bathrooms, a formal dining area, and a fully equipped kitchen. With modern touches such as top-tier appliances, double automated garages, and air-conditioning, this property offers both comfort and convenience.

Luxurious Master Suite: The master bedroom provides a private retreat, featuring ample closet space, air-conditioning, and a private en-suite bathroom for ultimate relaxation.

Elegant Living Spaces: Bright and airy, the lounges are ideal for family...

Features

Pets Allowed Yes

Interior

| | |
|--------------|----|
| Bedrooms | 5 |
| Bathrooms | 4 |
| Kitchens | 1 |
| Recep. Rooms | 3 |
| Studies | 1 |
| Furnished | No |

Exterior

| | |
|---------------------|------|
| Garages | 3 |
| Carports / Parkings | 2 |
| Security | Yes |
| Pool | No |
| Views | True |

Sizes

| | |
|------------|-------------------|
| Floor Size | 326m ² |
| Land Size | 675m ² |

