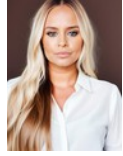




Lindi Honey
082 444 8996
lindhoney@dpg.co.za



Christy Du Preez
082 300 8532

christydupreez@dpg.co.za

Contact Westville A-Team

031 2664343

1 Knightbridge,
16 Westville Road,
Westville



Web Ref DPR12622



R1,795,000

🛏️ 3 🚿 3 🚗 2

Monthly Bond Repayment R18,527.78

Calculated over 20 years at 11% with no deposit.

Transfer Costs R60,739.00 **Bond Costs** R30,875.00

These calculations are only a guide. Please ask your conveyancer for exact calculations.

Monthly Rates R1,300

Central home with valley views

Unveiling a gem nestled in the lush landscapes of Westville, This 3 bedroom, 2 bathroom split level home is available for an attractive R 1 795 000.

With a welcoming ambiance exuding warmth from the moment you cross the threshold, this lovely home showcases a stunning sundeck offering sweeping valley views. Enjoy morning coffees and sunset vintages in the company of breathtaking panoramas year round. Central to the heart of Westville, yet enjoying the tranquility of a suburban escape, this location is unbeatable.

One of Westville's most impressive features is its schooling options, and this home is zoned perfectly for central schools, placing quality education right at your door step!

Features

Pets Allowed	Yes		
Interior		Exterior	Sizes
Bedrooms	3	Garages	2
Bathrooms	3	Carports / Parkings	2
Kitchens	1	Security	Yes
Recep. Rooms	2	Pool	No
Furnished	No	Views	False
			Land Size
			2,218m ²