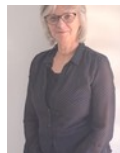




Jenny Grant
082 655 2117
jennygrant@dpg.co.za



Sheri Minter
031 266 9091
sheriminter@dpg.co.za

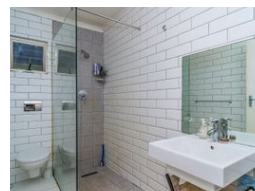
Contact Westville

031 2669091

Shop 1, Gordana Court,
22/26 Salisbury Avenue,
Westville



Web Ref DPR17498



R1,050,000

2 1

Monthly Bond Repayment R10,837.98
Calculated over 20 years at 11% with no deposit.

Transfer Costs R32,749.00 **Bond Costs** R25,220.00
These calculations are only a guide. Please ask your conveyancer for exact calculations.

Monthly Levy R1,513 **Monthly Rates** R780 **Special Levy** R1,759

CUTE, COMPACT & CONVENIENT

Rush to view this well priced unit close to Sherwood Mosque, Westwood Shopping mall, and good access to M13.

Excellent security with 24/7 manned gate and patrols as well as a guard hut right outside this unit.

Tandem carport, reasonable rates and levy. The ideal starter or downsizer for mom and dad.

Westville schools on your doorstep.

Features

Interior		Exterior		Sizes	
Bedrooms	2	Carports / Parkings	2	Floor Size	64m ²
Bathrooms	1	Security	Yes		
Kitchens	1	Pool	No		
Recep. Rooms	2	Views	False		
Furnished	No				

