

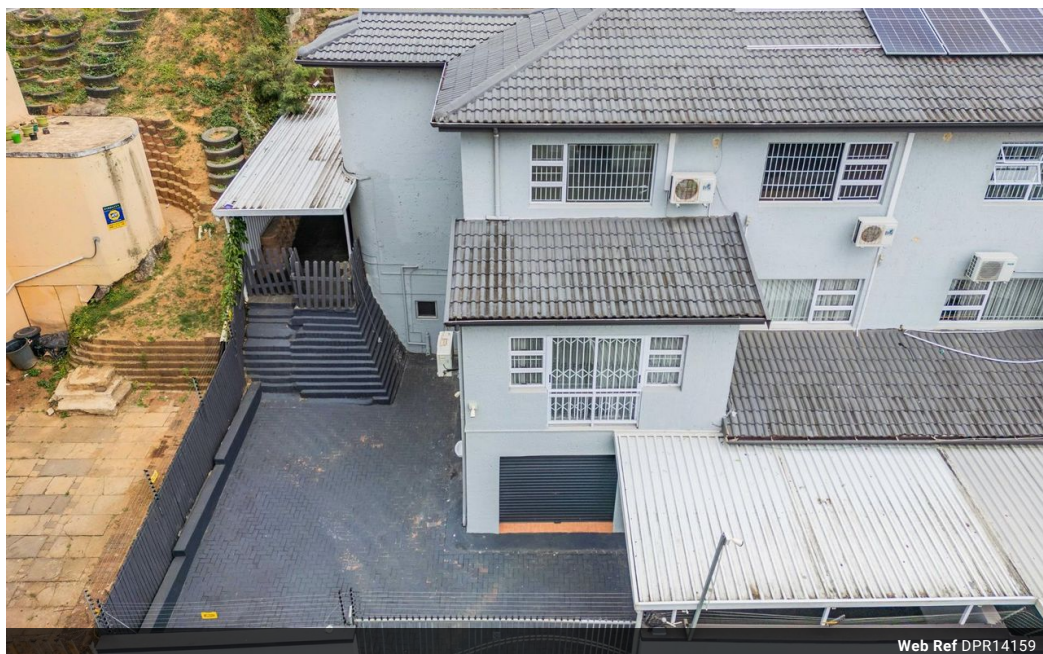


Anne Heyes
083 9635330
anneheyes@dpg.co.za

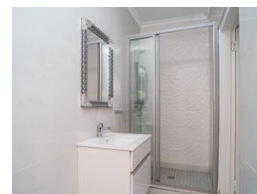
Contact Westville A-Team

031 2664343

1 Knightbridge,
16 Westville Road,
Westville



Web Ref DPR14159



R1,760,000

3 3 1

Monthly Bond Repayment R18,166.52
Calculated over 20 years at 11% with no deposit.

Transfer Costs R58,639.00 **Bond Costs** R30,875.00

These calculations are only a guide. Please ask your conveyancer for exact calculations.

Monthly Rates R1,914

Discover this captivating townhouse in Sherwood

Discover this captivating townhouse in Sherwood, priced to sell and designed to impress. Featuring a newly installed designer kitchen equipped with top-quality appliances, both gas and electric stoves, an adjoining scullery, and a small tucked-away pantry. The property includes three spacious bedrooms, each equipped with ample cupboard space and individual air conditioning units for ultimate comfort. Two bedrooms come with ensuite bathrooms that are both modern and tastefully finished, complemented by an additional family bathroom. Natural light floods every room, enhancing the home's bright and airy feel. The home also boasts two inviting lounges, perfect for relaxation and entertaining. There is also a dedicated study, ideal for working from home or as a quiet retreat. A partially covered private area in the back offers a...

Features

Pets Allowed	Yes			
Interior		Exterior		Sizes
Bedrooms	3	Garages	1	Floor Size
Bathrooms	3	Carports / Parkings	1	192m ²
Kitchens	1	Security	Yes	
Recep. Rooms	3	Pool	No	
Studies	1	Views	False	
Furnished	No			