



**Anne Heyes**  
083 9635330  
anneheyas@dpg.co.za

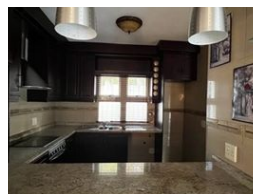
Contact Westville A-Team

031 2664343

1 Knightbridge,  
16 Westville Road,  
Westville



Web Ref DPR14502



**R1,190,000**

🛏️ 2   🚿 1   🚗 2

**Monthly Bond Repayment** R12,283.04  
Calculated over 20 years at 11% with no deposit.

**Transfer Costs** R32,749.00   **Bond Costs** R25,220.00  
These calculations are only a guide. Please ask your conveyancer for exact calculations.

**Monthly Levy** R2,329   **Monthly Rates** R873

Immaculate stepless garden unit in 24hr security gated complex!

Charming Single-Level Residence in a Secure Complex

Discover this impeccably maintained single-level residence in a highly sought-after complex offering 24-hour security. This delightful simplex boasts a well-kept, child-friendly garden, providing a peaceful retreat. Conveniently located near UKZN, Westwood Mall, with easy access to the M13 and just a five-minute drive to the CBD.

This pet-friendly complex combines safety with affordability, featuring reasonable rates and levies. Whether you're starting a new chapter or seeking a tranquil retirement home, this property offers an ideal setting for both. Don't miss the opportunity to make this stepless lock-up-and-go simplex your own.

This is also a corner unit so you have lots of privacy for entertaining and extra parking.

### Features

<b>Pets Allowed</b>	Yes				
<b>Interior</b>		<b>Exterior</b>		<b>Sizes</b>	
Bedrooms	2	Garages	2	Floor Size	75m <sup>2</sup>
Bathrooms	1	Carports / Parkings	2		
Kitchens	1	Security	Yes		
Recep. Rooms	2	Pool	No		
Furnished	No	Views	False		