



**Jenny Grant**  
082 655 2117  
jennygrant@dpg.co.za

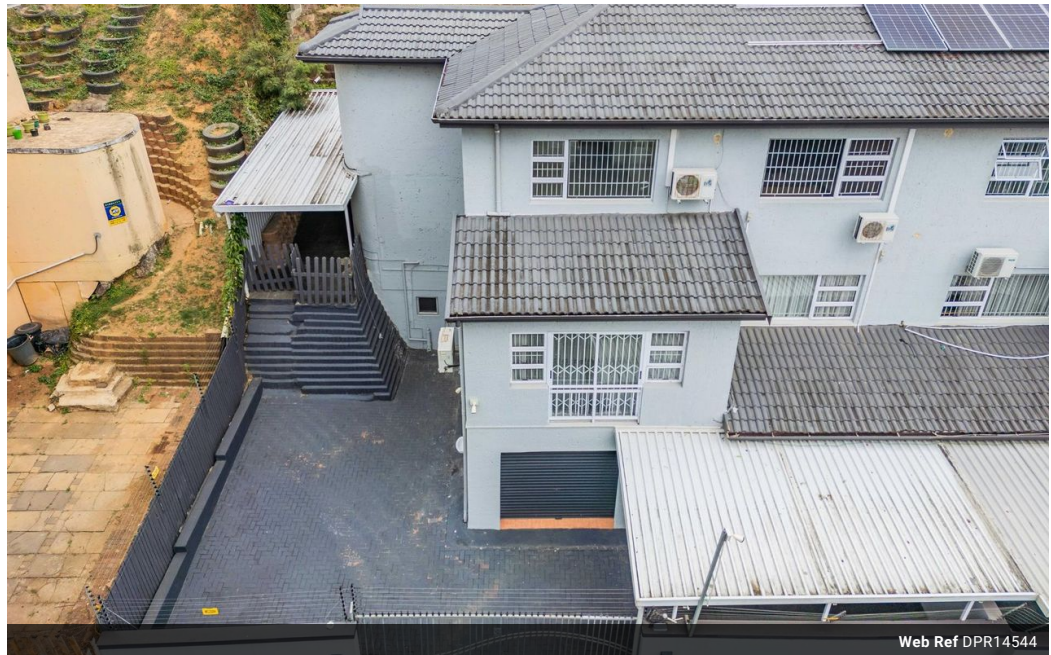


**Sheri Minter**  
031 266 9091  
sheriminter@dpg.co.za

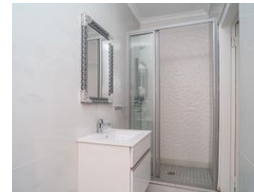
Contact Westville

031 2669091

Shop 1, Gordana Court,  
22/26 Salisbury Avenue,  
Westville



Web Ref DPR14544



**R1,760,000**

3 3.5 1

**Monthly Bond Repayment** R18,166.52  
Calculated over 20 years at 11% with no deposit.

**Transfer Costs** R58,639.00 **Bond Costs** R30,875.00

These calculations are only a guide. Please ask your conveyancer for exact calculations.

**Monthly Rates** R1,914

## MODERN TOWNHOUSE IN SHERWOOD!

Experience luxurious living at its finest in this modern 4-bedroom townhouse. From the moment you step inside, you will love the sleek and contemporary design that defines this exquisite residence.

The spacious lounge area is bathed in natural light, the kitchen is a chef's dream, featuring top-of-the-line appliances and ample counter space to unleash your culinary creativity.

With four bedrooms, including two elegant en suites, privacy and comfort are guaranteed for all residents. The master bedroom boasts a generous walk-in closet, providing ample storage space for all your wardrobe essentials.

Convenience is key, with a guest loo located on the main floor for added ease and accessibility for visitors. Parking is a breeze with space for up to four cars, making this townhouse ideal for families or those who value...

## Features

Interior		Exterior		Sizes	
Bedrooms	3	Garages	1	Floor Size	192m <sup>2</sup>
Bathrooms	3.5	Carports / Parkings	4	Land Size	3,359m <sup>2</sup>
Kitchens	1	Security	Yes		
Recep. Rooms	2	Pool	No		
Studies	1	Views	True		
Furnished	No				

