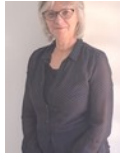




Jenny Grant
082 655 2117
jennygrant@dpg.co.za

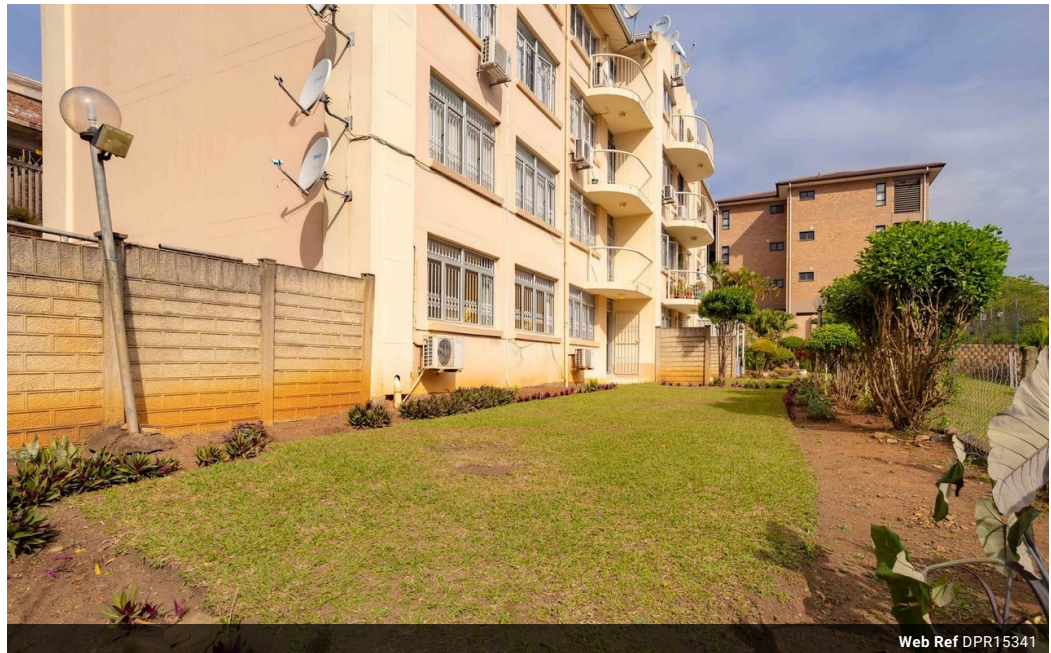


Sheri Minter
031 266 9091
sheriminter@dpg.co.za

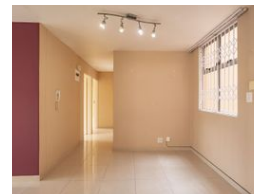
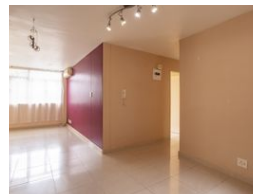
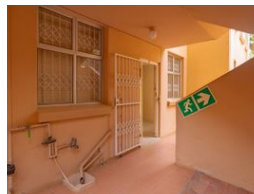
Contact Westville

031 2669091

Shop 1, Gordana Court,
22/26 Salisbury Avenue,
Westville



Web Ref DPR15341



R1,399,000

🛏 3 🚿 2

Monthly Bond Repayment R14,440.32
Calculated over 20 years at 11% with no deposit.

Transfer Costs R40,587.00 **Bond Costs** R27,105.00
These calculations are only a guide. Please ask your conveyancer for exact calculations.

Monthly Levy R1,797 **Monthly Rates** R1,832

BARGAIN 3 BED UNIT IN SHERWOOD

Reduced below Municipal Value for a Quick Sale- Best Value in Town

Immaculate, bright airy and light, ready for you to move into Ground floor Garden unit. This modern well-loved spacious unit with porcelain tiles throughout, an open Plan kitchen fitted with UCO/HOB Extractor, Mosaic wall tiles, built-in cupboards and Granite tops with Spacious Lounge / Dining Room, 3 Bedrooms, 2 Bathrooms (MES is wheel chair friendly and recently renovated) is up for grabs for the discerning family with area, security and affordability in mind.

Ideal for a Lock-up and go Lifestyle or an Investment Property to supplement your property portfolio.

With its central Sherwood location close to Schools, mosques and Shopping Centre, this garden apartment will sell quickly

Features

Interior		Exterior		Sizes	
Bedrooms	3	Carports / Parkings	1	Floor Size	94m ²
Bathrooms	2	Security	Yes		
Kitchens	1	Pool	No		
Recep. Rooms	2	Views	True		
Furnished	No				

