



Jenny Grant
082 655 2117
jennygrant@dpg.co.za



Sheri Minter
031 266 9091
sheriminter@dpg.co.za

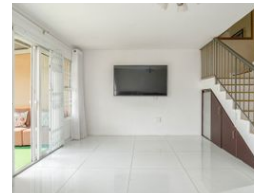
Contact Westville

031 2669091

Shop 1, Gordana Court,
22/26 Salisbury Avenue,
Westville



Web Ref DPR15913



R1,375,000

Monthly Bond Repayment R14,192.59
Calculated over 20 years at 11% with no deposit.

Transfer Costs R39,867.00 **Bond Costs** R27,105.00
These calculations are only a guide. Please ask your conveyancer for exact calculations.

Monthly Levy R2,400

3 2

Elegant Townhouse in Secure Sherwood Complex

View by Appointment: Discover the perfect blend of comfort and security in this beautiful townhouse, located in the sought-after Sherwood area. Nestled within a safe, secure complex with 24/7 guard protection, this home features 3 spacious bedrooms with built-in cupboards, including a master suite with an ensuite bathroom. The living space boasts a seamless open-plan design, with a lounge, dining room, and kitchen all elegantly tiled, creating a welcoming environment for family gatherings and entertaining guests. The mix of tile and laminate flooring throughout adds a touch of sophistication to the home's interior. The home boast 3 Aircons in total and comes fully furnished. Outside you have a access to a private washing line and scullery area

With 2 well-appointed bathrooms and a garage, this townhouse ensures ample space and...

Features

Interior		Exterior		Sizes	
Bedrooms	3	Carports / Parkings	2	Floor Size	120m ²
Bathrooms	2	Security	Yes		
Kitchens	1	Pool	Yes		
Recep. Rooms	2	Views	True		
Furnished	No				

