



Mervin Donnelly
061 696 8809
mervin.d@dpg.co.za

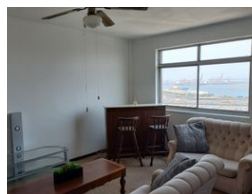
Contact Head Office - Dormehl Lite

012 0000000

1170 Moulton Avenue
Waverley
0184



Web Ref DPR897



R698,000

2 2

Monthly Bond Repayment R7,204.67
Calculated over 20 years at 11% with no deposit.

Transfer Costs R23,730.00 **Bond Costs** R17,680.00
These calculations are only a guide. Please ask your conveyancer for exact calculations.

Monthly Levy R2,400

Spacious 2 bedroom apartment in South beach for sale!!!!

Dormehl Phalane proudly presents this spacious 2 bedroom apartment for sale in South beach. The property consists of:
size 92 sqm
2 spacious bedrooms with built in cupboards
1 MES
1 family bathroom
spacious lounge/dining room
fitted kitchen with built in cupboards HOB and UCO
1 undercover parking
harbour views
close to all amenities

To view this property please contact Mervin Donnelly

Features

Interior		Exterior		Sizes	
Bedrooms	2	Security	No	Floor Size	92m ²
Bathrooms	2	Pool	No		
Kitchens	1	Views	False		
Recep. Rooms	1				
Furnished	No				