

1 Bedroom Apartment For Sale in South Beach



Mervin Donnelly
061 696 8809
mervin.d@dpg.co.za

Contact Head Office - Dormehl Lite

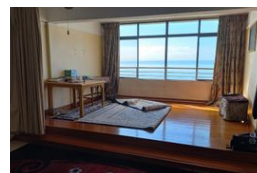
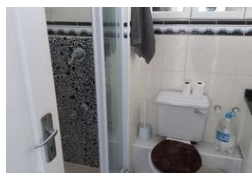
012 0000000

1170 Moulton Avenue
Waverley
0184



SOLE MANDATE

Web Ref DPG2764636



R799,000



Monthly Bond Repayment R8,247.19
Calculated over 20 years at 11% with no deposit.

Transfer Costs R25,898.00 **Bond Costs** R19,565.00
These calculations are only a guide. Please ask your conveyancer for exact calculations.

Monthly Levy R2,200

1 Bedroom Apartment For Sale in South Beach

Stunning apartment for sale frontline south beach!!!

Dormehl Phalane proudly presents this stunning apartment for sale on frontline South Beach. The property consists of:
360 sea views
close to all amenities
kitchen fully fitted with granite tops HOB,UJO,extractor fan and Bics
Open plan lounge
Dinning room with sea views
Family bathroom
Spacious bedroom
MES
1 parking bay

To view this property please contact Mervin Donnelly

Features

Interior

Bedrooms 1
Bathrooms 2
Recep. Rooms 2

Exterior

Carports / Parkings 1
Pool No

