



Stacy Fernandez
069 354 3613
stacy.f@dpg.co.za

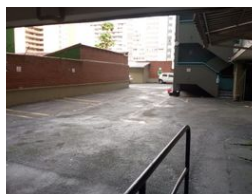
Contact Head Office - Dormehl Lite

012 0000000

1170 Moulton Avenue
Waverley
0184



Web Ref DPR18927



R795,000

1 1

Monthly Bond Repayment R8,205.90
Calculated over 20 years at 11% with no deposit.

Transfer Costs R25,898.00 **Bond Costs** R19,565.00
These calculations are only a guide. Please ask your conveyancer for exact calculations.

Monthly Levy R1,668 **Monthly Rates** R980

Cozy One Bedroom Apartment For Sale!

Dormehl Phalane Property Group offers you this cozy one bedroom apartment in the prime of South Beach with beautiful sea views in a very well maintained building with 24 Hr security its frontline apartment and comes with one under cover parking bay. It has open plan fully fitted kitchen with lounge all modern finishes. One standard bathroom. The bedroom is fully fitted as well. Price is slightly negotiable. Low levies and rates, close to all amenities.

Features

Interior		Exterior		Sizes	
Bedrooms	1	Carports / Parkings	1	Floor Size	51m ²
Bathrooms	1	Security	Yes		
Kitchens	1	Pool	No		
Recep. Rooms	1	Views	True		
Furnished	No				