

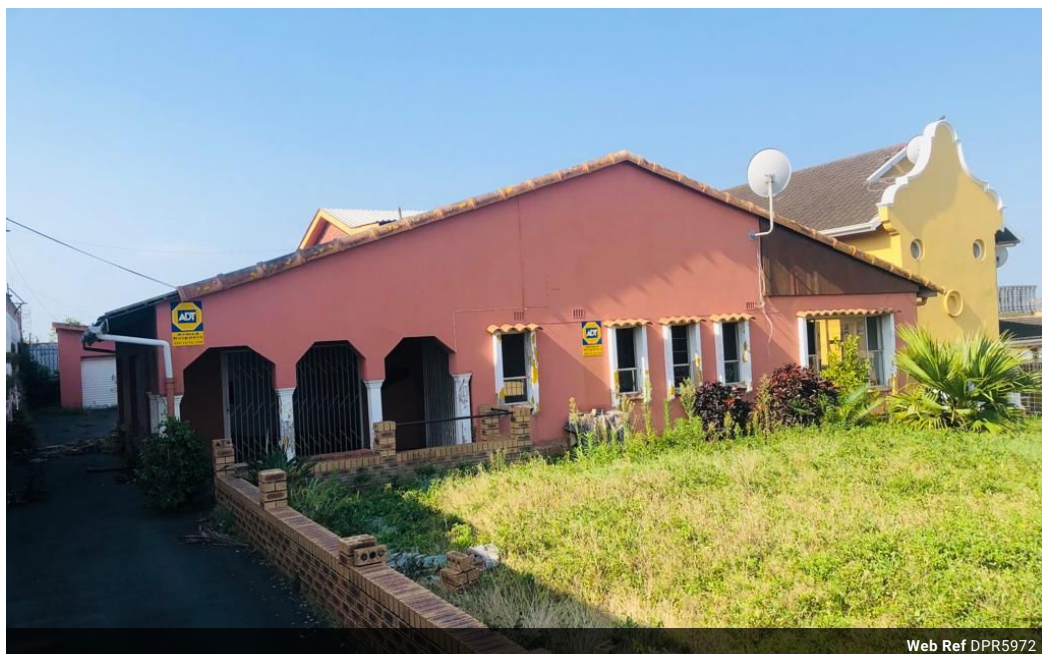


Stacy Fernandez
069 354 3613
stacy.f@dpg.co.za

Contact Head Office - Dormehl Lite

012 0000000

1170 Moulton Avenue
Waverley
0184



Web Ref DPR5972



R2,200,000

3 1 1

Monthly Bond Repayment R22,708.14
Calculated over 20 years at 11% with no deposit.

Transfer Costs R89,947.00 **Bond Costs** R34,625.00
These calculations are only a guide. Please ask your conveyancer for exact calculations.

Monthly Rates R1,500

EXCELLENT INVESTMENT PROPERTY FOR SALE

Dormehl Phalane property group offers you this great investment property in Sydenham. This property needs some TLC sold voetstoets. It consists of a spacious 3 bedroom house with lounge, dining, kitchen and bathroom with 2x 2 bedroom flatlets and a bachelor with great rental return. There is open parking and a lock up garage beautiful level land and fully fenced with one shared driveway. Close to all amenities.

Features

Pets Allowed	Yes		
Interior		Exterior	Sizes
Bedrooms	3	Garages	1
Bathrooms	1	Carports / Parkings	5
Kitchens	1	Security	No
Recep. Rooms	2	Pool	No
Furnished	No	Views	False
			Land Size
			1,005m ²