

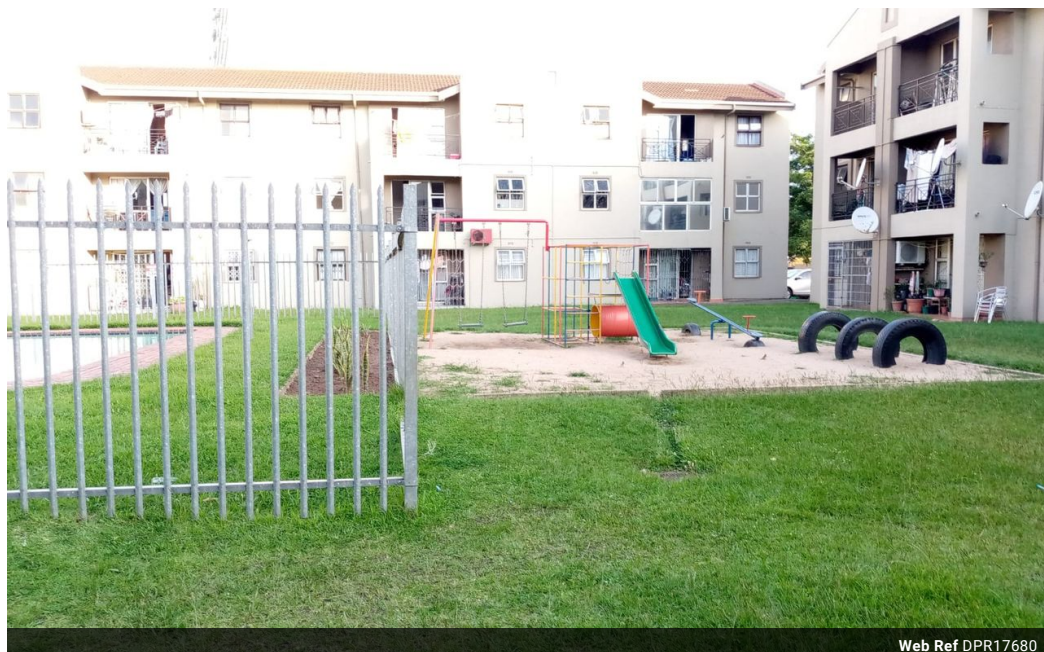


**Stacy Fernandez**  
069 354 3613  
stacy.f@dpg.co.za

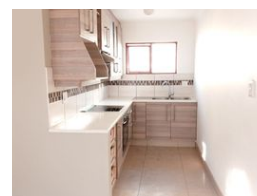
Contact Head Office - Dormehl Lite

012 0000000

1170 Moulton Avenue  
Waverley  
0184



Web Ref DPR17680



**R580,000**

2   1

**Monthly Bond Repayment** R5,986.69  
Calculated over 20 years at 11% with no deposit.

**Transfer Costs** R21,217.00   **Bond Costs** R15,795.00  
These calculations are only a guide. Please ask your conveyancer for exact calculations.

**Monthly Levy** R910   **Monthly Rates** R460

**Modern 2 Bedroom Apartment for Sale!**

Dormehl Phalane Property Group offers you this modern 2 bedroom apartment for sale. This unit is situated in a well maintained complex with communal pool and braai area. Suitable for investment or small family. Its fully fitted with open plan lounge and dining area. One brand new fitted bathroom. It also has one open parking bay. Great investment opportunity. Safe and secured complex 24 Hr security. Low levies and rates. Close to all amenities.

**Features**

<b>Interior</b>		<b>Exterior</b>		<b>Sizes</b>	
Bedrooms	2	Carports / Parkings	1	Floor Size	44m <sup>2</sup>
Bathrooms	1	Security	Yes		
Kitchens	1	Pool	Yes		
Recep. Rooms	1	Views	True		
Furnished	No				