

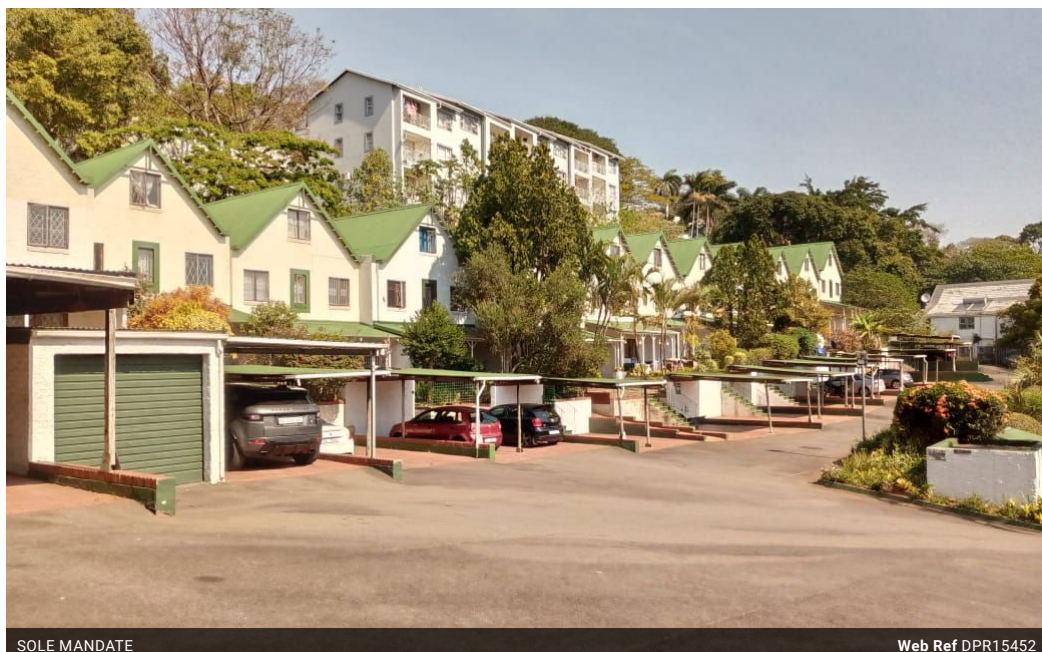


Stacy Fernandez
069 354 3613
stacy.f@dpg.co.za

Contact Head Office - Dormehl Lite

012 0000000

1170 Moulton Avenue
Waverley
0184



SOLE MANDATE

Web Ref DPR15452



R895,000

3 2.5

Monthly Bond Repayment R9,238.09
Calculated over 20 years at 11% with no deposit.

Transfer Costs R28,244.00 **Bond Costs** R21,450.00

These calculations are only a guide. Please ask your conveyancer for exact calculations.

Monthly Levy R1,500 **Monthly Rates** R500

3 Bedroom Triple Storey Townhouse For Sale!

Dormehl Phalane Property Group offers you this triple storey 3 bedroom full fitted townhouse in a well maintained complex. It has a spacious open plan lounge and dining area which leads to an outside enclosed garden area. It also has a modern fitted kitchen with a guest toilet. There are 2 bedrooms on the second level with a full family bathroom and it also has a walk in closet. The main bedroom is in the loft with a en-suite. There are 2 under cover parking bay areas. Price is negotiable. Close to all amenities.

Features

Interior		Exterior		Sizes	
Bedrooms	3	Carports / Parkings	2	Floor Size	143m ²
Bathrooms	2.5	Security	No		
Kitchens	1	Pool	No		
Recep. Rooms	2	Views	False		
Studies	1				
Furnished	No				