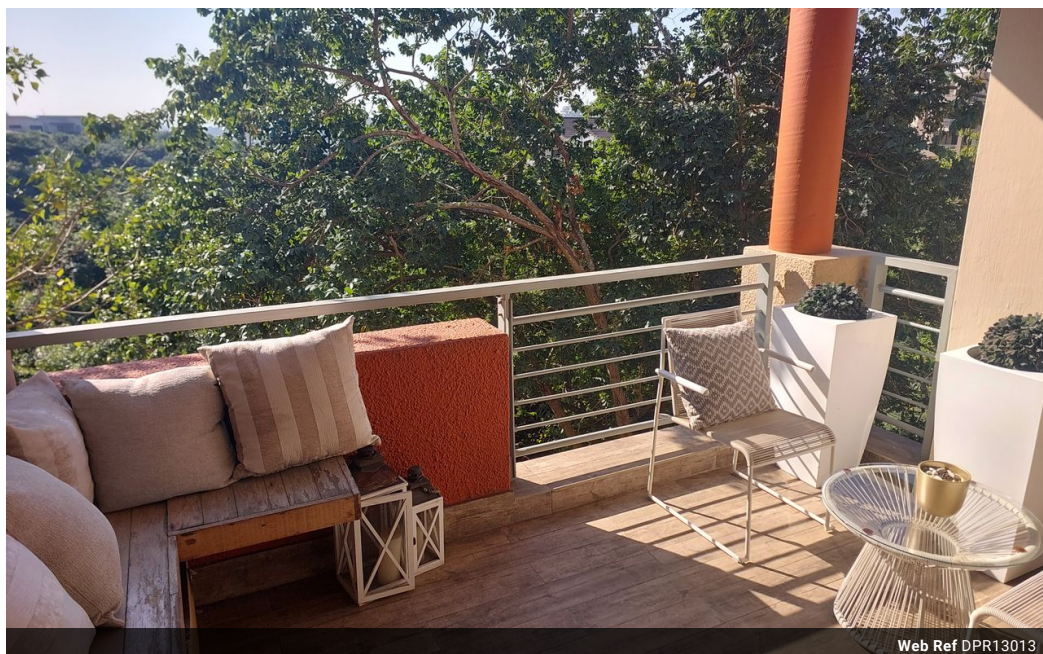


**Christy Du Preez**  
082 300 8532  
christydupreez@dpg.co.za

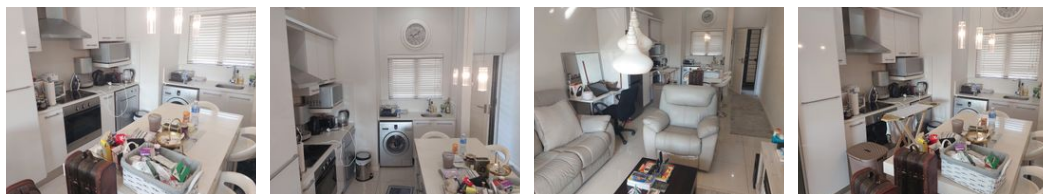
Contact Westville A-Team

031 2664343

1 Knightbridge,  
16 Westville Road,  
Westville



Web Ref DPR13013



**R1,849,000**

2   2

**Monthly Bond Repayment** R19,085.16  
Calculated over 20 years at 11% with no deposit.

**Transfer Costs** R66,146.00   **Bond Costs** R32,760.00

These calculations are only a guide. Please ask your conveyancer for exact calculations.

**Monthly Levy** R2,500   **Monthly Rates** R1,500

Not a cent to be spent!

Out of this world finishes, with not one cent to be spent on this spacious 2 bedroom unit in secure Westwood Estate.

Secure, lock up and go and a well maintained complex to be apart of.

This unit has scenic views, each section has its own clubhouse and secure parking.

Call us to view!

**Features**

<b>Interior</b>		<b>Exterior</b>		<b>Sizes</b>	
Bedrooms	2	Carports / Parkings	1	Floor Size	74m <sup>2</sup>
Bathrooms	2	Security	Yes		
Kitchens	1	Pool	Yes		
Recep. Rooms	2	Views	True		
Furnished	No				