

**Christy Du Preez**  
082 300 8532  
christydupreez@dpg.co.za

Contact Westville A-Team

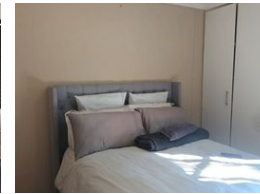
031 2664343

1 Knightbridge,  
16 Westville Road,  
Westville



SOLE MANDATE

Web Ref DPR13912



**R1,400,000**

2   2

**Monthly Bond Repayment** R14,450.64  
Calculated over 20 years at 11% with no deposit.

**Transfer Costs** R40,617.00   **Bond Costs** R27,105.00  
These calculations are only a guide. Please ask your conveyancer for exact calculations.

Entry Level!

Seldomly do we get a unit in Westwood Estate which is entry level - meaning no stairs!

This unit has 2 bedrooms, 2 bathrooms.

Open plan kitchen, lounge and dining room with doors onto a covered balcony.  
Great security, close to Westwood mall.

### Features

**Interior**

Bedrooms	2
Bathrooms	2
Kitchens	1
Recep. Rooms	2
Furnished	No

**Exterior**

Carports / Parkings	1
Security	Yes
Pool	Yes
Views	True