

Christy Du Preez
082 300 8532
christydupreez@dpg.co.za

Contact Westville A-Team

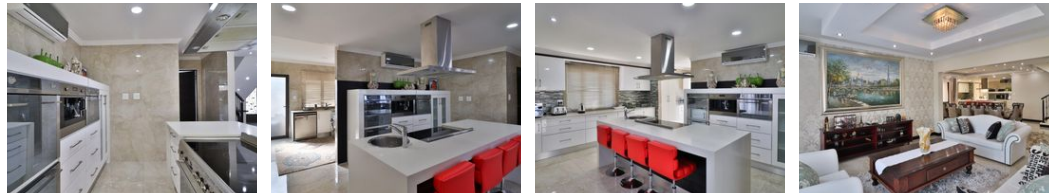
031 2664343

1 Knightbridge,
16 Westville Road,
Westville

FEATURED



Web Ref DPG2752147



R6,495,000

Monthly Bond Repayment R67,040.64
Calculated over 20 years at 11% with no deposit.

Transfer Costs R578,216.00 **Bond Costs** R70,535.00
These calculations are only a guide. Please ask your conveyancer for exact calculations.

Monthly Rates R4,200

3 3 2

Beautifully located and designed!

This unit is 377m2, is a duplex and is spacious, airy, light and bright.

As you walk in you have a huge grand entrance hall, double volume ceilings giving you the comfort of loads of space and a unit which is fully tiled throughout.

Lovely flow from your lounge and your living areas to your open plan dining room which can seat 10 or more guests easily and every women's dream gourmet kitchen with top appliances & a seperate hidden scullery.

Upstairs are your spacious bedrooms and second lounge, with an option to close this lounge should you need a forth bedroom. Modern bathrooms and 2 balconys with lovely views.

Your own private level garden for the kiddies and extended parking a which is exclusive use to YOU only! Plus security, which is at a extra cost but specifically for your complex only!

These units are like...

Features

Pets Allowed Yes

Interior
Bedrooms 3
Bathrooms 3
Kitchens 1
Recep. Rooms 4
Furnished No

Exterior
Garages 2
Carports / Parkings 4
Security Yes
Dom. Accom. 1
Pool No
Views True

Sizes
Floor Size 377m²
Land Size 2,617m²

