

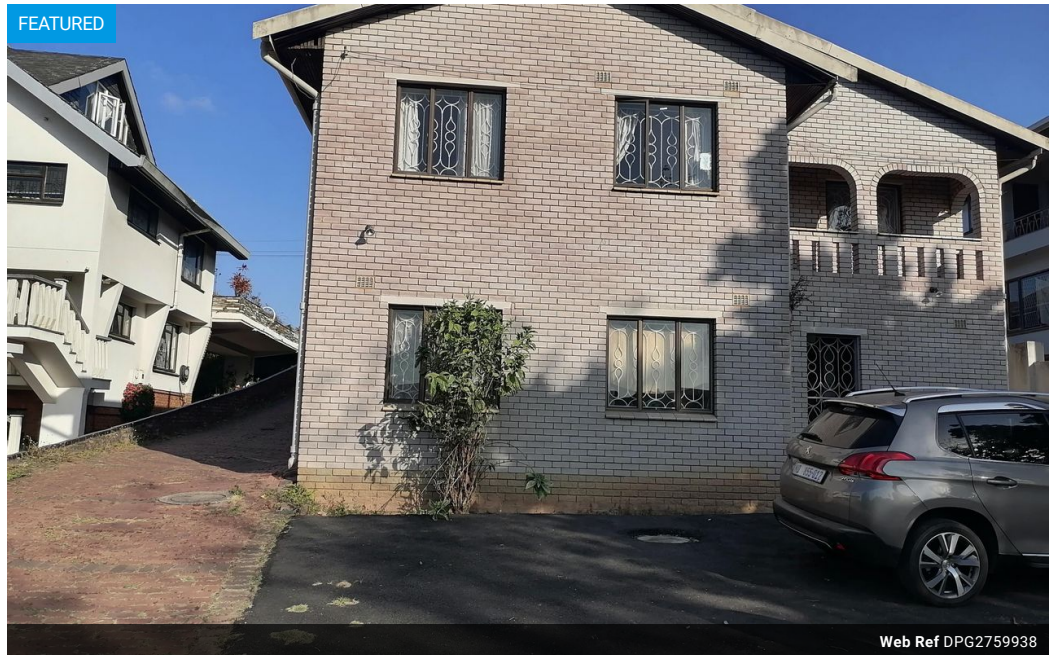
**Christy Du Preez**  
082 300 8532  
christydupreez@dpg.co.za

Contact Westville A-Team

031 2664343

1 Knightbridge,  
16 Westville Road,  
Westville

FEATURED



Web Ref DPG2759938



R2,000,000

🛏️ 6 🚿 4 🚗 2

**Monthly Bond Repayment** R20,643.77

Calculated over 20 years at 11% with no deposit.

**Transfer Costs** R75,206.00    **Bond Costs** R32,760.00

These calculations are only a guide. Please ask your conveyancer for exact calculations.

**Monthly Rates** R2,079

A property for the whole family!

You read right!

This is a home which has been built to suit the bigger families. Split over 2 levels this property offers many options.

Your first level has no stairs, 4 bedrooms, and 3 bathrooms. Seperate large lounge, dining room and HUGE kitchen with a Seperate scullery and lots of cupboards. Your second level offers you 2 bedrooms and a bathroom, with one room currently being used as a study. This can easily be incorporated into the house or rented out.

Besides being light and bright throughout this home has loads of parking & gorgeous views!

### Features

<b>Pets Allowed</b>	Yes		
<b>Interior</b>		<b>Exterior</b>	<b>Sizes</b>
Bedrooms	6	Garages	2
Bathrooms	4	Carports / Parkings	8
Kitchens	1	Security	Yes
Recep. Rooms	2	Pool	No
Furnished	No	Views	True
			Land Size
			2,135m²

