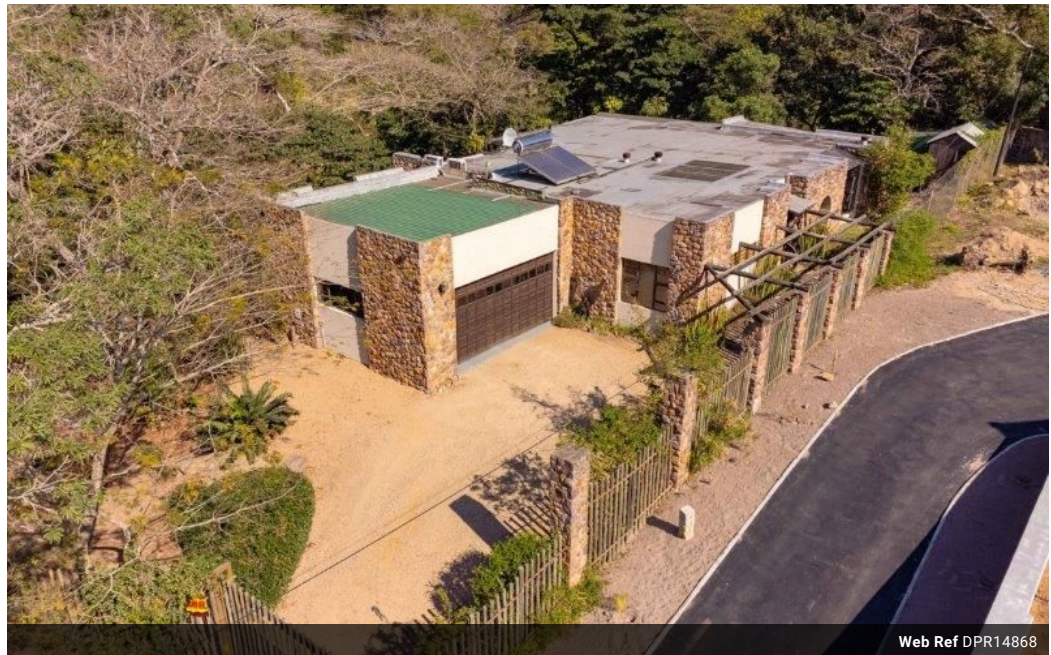


Christy Du Preez
082 300 8532
christydupreez@dpg.co.za

Contact Westville A-Team

031 2664343

1 Knightbridge,
16 Westville Road,
Westville



Web Ref DPR14868



R3,250,000

3 2 3

Monthly Bond Repayment R33,546.12
Calculated over 20 years at 11% with no deposit.

Transfer Costs R192,047.00 **Bond Costs** R45,955.00
These calculations are only a guide. Please ask your conveyancer for exact calculations.

Monthly Rates R1,665

Unique stunning home

Unique stunning home designed and built 19 years ago by architect, Dave James. This nature lovers' paradise offers immense peace and tranquillity. Situated in a quiet cul-de-sac, nestled in a landscaped manicured indigenous garden with the Palmiet River and nature reserve on the boundary, the garden has a pond and a heated rock-pool with a waterfall feature. This garden has been voted the best indigenous garden for 4 years in a row.

Features

Pets Allowed	Yes				
Interior		Exterior		Sizes	
Bedrooms	3	Garages	3	Land Size	3,318m ²
Bathrooms	2	Carports / Parkings	3		
Kitchens	1	Security	Yes		
Recep. Rooms	2	Pool	Yes		
Studies	1	Views	False		
Furnished	No				