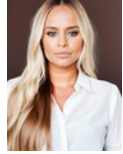




Lindi Honey
082 444 8996
lindhoney@dpg.co.za



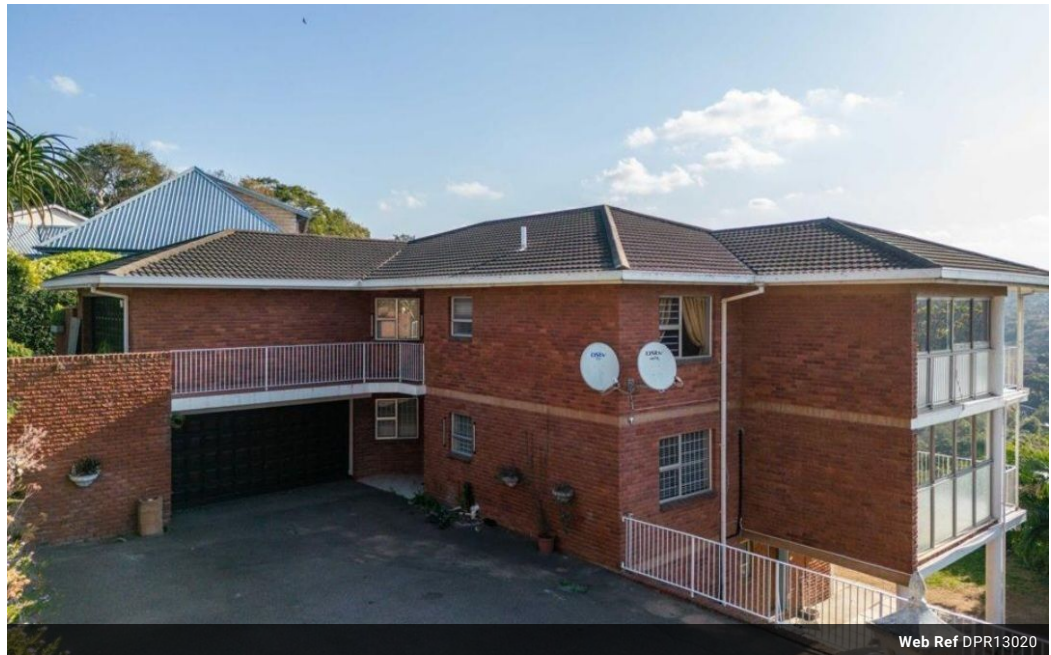
Christy Du Preez
082 300 8532

christydupreez@dpg.co.za

Contact Westville A-Team

031 2664343

1 Knightbridge,
16 Westville Road,
Westville



Web Ref DPR13020



R2,495,000

🛏️ 3 🚿 2 🚗 2

Monthly Bond Repayment R25,753.10
Calculated over 20 years at 11% with no deposit.

Transfer Costs R115,320.00 **Bond Costs** R38,415.00
These calculations are only a guide. Please ask your conveyancer for exact calculations.

Monthly Rates R1,893

One of two facebrick units

Situated in the peaceful, central suburb of Westville, this stunning home offers not just a place to live, but a quality of life that is unparalleled.

Presenting a facebrick facade that blends beautifully with its surroundings, this property offers direct access to the unit from a double garage- providing both convenience and security. The hearty,spacious interiors reflect a dedication to comfort, creating a warm and welcoming atmosphere throughout.

The unit showcases three generously sized bedrooms with ample wardrobe space, matched with two bathrooms. An added bonus; the double domestic rooms could easily be converted into a separate flat, making this property a versatile investment.

The property comes standard with a beautiful view patio, creating an airy extension of your living space and offering a tranquil zone for...

Features

Pets Allowed	Yes		
Interior		Exterior	Sizes
Bedrooms	3	Garages	2
Bathrooms	2	Carports / Parkings	4
Kitchens	1	Security	Yes
Recep. Rooms	3	Dom. Accom.	2
Furnished	Yes	Pool	No
		Views	True
			Floor Size 232m ²