



**Tumi Semakane**  
0659946098  
tumi.s@dpg.co.za

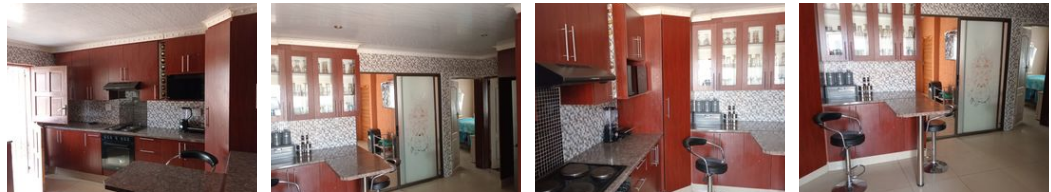
Contact Vanderbijlpark / Sasolburg

016 0042353

Shop 2,  
The Palms Shopping Center,  
Louis Trichardt Blvd,  
Vanderbijlpark,  
1911



Web Ref DPR16540



**R440,000**

4 Bedrooms 1.5 Bathrooms 1 Garage

**Monthly Bond Repayment** R4,541.63  
Calculated over 20 years at 11% with no deposit.

**Transfer Costs** R17,928.00    **Bond Costs** R12,935.00

These calculations are only a guide. Please ask your conveyancer for exact calculations.

**Monthly Rates** R300

**Spacious Family Home with Potential**

This charming family home is ideally situated next to a main road, offering convenience and easy access to local amenities. The property features a well-sized kitchen, perfect for family meals and gatherings, and a comfortable lounge that provides a relaxing space for everyday living. With four spacious bedrooms, this home provides ample space for a growing family. The two bathrooms are conveniently located to serve the needs of the household, ensuring comfort and practicality for all.

In addition to the main house, the property includes a garage for secure parking and an outside room that can be used as a storage space, workroom, or converted into a small flatlet. The location offers the benefit of being near a main road, making it ideal for those who value accessibility and proximity to shops, schools, and public transport....

**Features**

<b>Pets Allowed</b>	Yes			
<b>Interior</b>		<b>Exterior</b>		<b>Sizes</b>
Bedrooms	4	Garages	1	Land Size
Bathrooms	1.5	Security	Yes	314m <sup>2</sup>
Kitchens	1	Dom. Accom.	1	
Recep. Rooms	1	Pool	No	
Furnished	No	Views	False	

