



**Guy Demont**  
072 876 4956  
guyd@dpg.co.za

Contact Upper Highway Gillitts

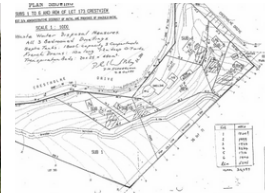
031 7646262

8 Old Main Road  
Gillitts

NO TRANSFER DUTY



Web Ref DPG2762322



**R950,000**

**Monthly Bond Repayment** R9,805.79  
Calculated over 20 years at 11% with no deposit.

**Transfer Costs** R30,412.00    **Bond Costs** R23,335.00  
These calculations are only a guide. Please ask your conveyancer for exact calculations.

### Vacant Land Crestholme

Developers this may be what you are looking for.  
18850 sqm vacant land.  
Zoned as Residential 1400 this land can accommodate up to 10 townhouses.  
Interested parties can call me and I will share more information.

### Features

