



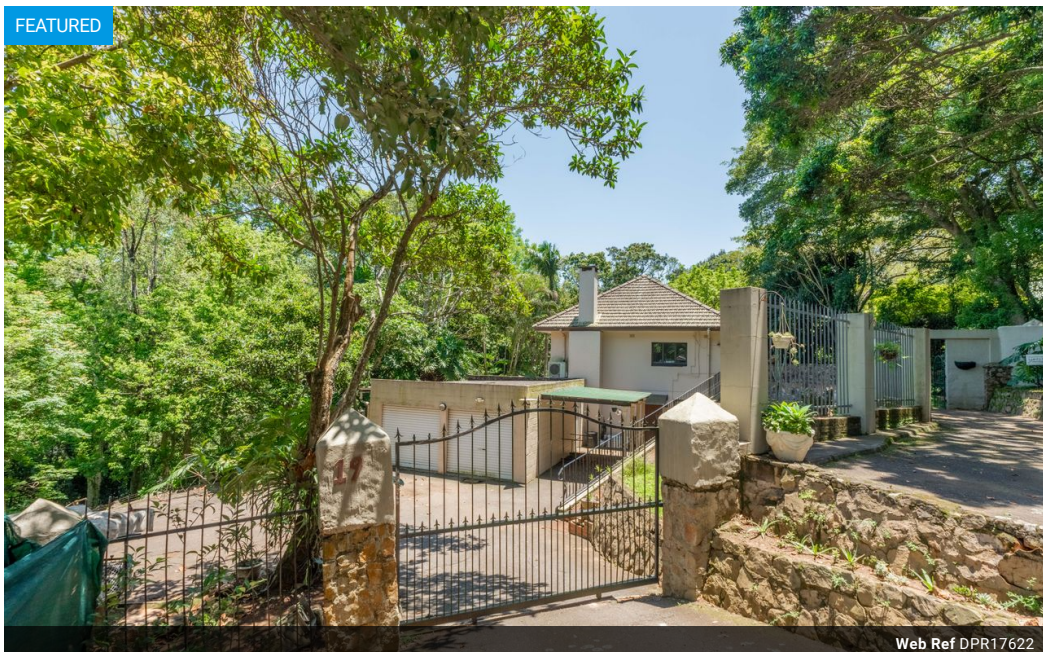
**Vanessa Coulson**  
Candidate Property Practitioner  
Registered with PPRA (FFC 124 977 6)  
083 303 7199  
vanessacoulson@dpg.co.za

Contact Upper Highway Gillitts

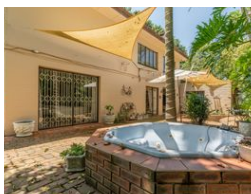
031 7646262

8 Old Main Road  
Gillitts

FEATURED



Web Ref DPR17622



R1,950,000

3 3 2

**Monthly Bond Repayment** R20,127.67  
Calculated over 20 years at 11% with no deposit.

**Transfer Costs** R72,206.00    **Bond Costs** R32,760.00  
These calculations are only a guide. Please ask your conveyancer for exact calculations.

**Monthly Rates** R2,935

The perfect investment property or forever family home

Want to expand your property portfolio or just looking for a house to call a home? This is the perfect find for someone who has vision and sees potential in gems like this old farmhouse, which has been restored and perfectly situated between Botha's Hill and Central Hillcrest. This double story home offers the opportunity to either rent it out as one big family home, 2 separate rentals or for a family just looking for their forever home.

Ground floor offers a modern kitchen with an open plan lounge and dining room area, a spacious bedroom with built-in cupboards and a full family bathroom.

Upper level offers 3 bedrooms with built in cupboards, a lounge with a fireplace, a bathroom with a bath only, yet spacious enough for a shower. Loo is separate. The bonus feature of the upper level is that it has its own entrance, which...

Features

<b>Pets Allowed</b>	Yes			
<b>Interior</b>		<b>Exterior</b>	<b>Sizes</b>	
Bedrooms	3	Garages	Land Size	1,801m <sup>2</sup>
Bathrooms	3	Carports / Parkings		
Kitchens	1	Security		
Recep. Rooms	3	Pool		
Furnished	No	Views		

