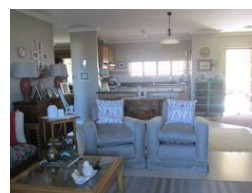
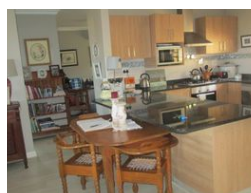




Jennifer Gordon
072 351 5363
jennifergordon@dpg.co.za

Contact Howick
033 3308066

122 Main Street,
Howick,
3290



R2,250,000

🛏️ 2 🚿 2 🚗 1

Monthly Bond Repayment R23,224.24

Calculated over 20 years at 11% with no deposit.

Transfer Costs R95,138.00 **Bond Costs** R36,530.00

These calculations are only a guide. Please ask your conveyancer for exact calculations.

Monthly Levy R2,638 **Monthly Rates** R1,183

SPACIOUS UPMARKET HOME IN EAGLE RIDGE FOR R 2 250 000

This immaculate and spacious home offers comfort, style, and breathtaking views – perfect for relaxed living in an upmarket setting.

The home features a glass-enclosed verandah with magnificent panoramic views, a generous lounge area, and open-plan living with luxury vinyl flooring throughout. The open-plan dining room leads into a wide entrance hall with a recess area that opens to a tiled external patio. The modern kitchen includes wrap-finished cupboards, granite countertops, a breakfast bar, gas hob, electric oven, blinds, and plumbing for a dishwasher.

The private main bedroom is large and includes a bay window with views, a walk-through dressing room, air conditioning, an overhead fan, and plush luxury carpeting. The full en-suite bathroom is modern and features both a shower and a bath. There is an additional spacious...

Features

Pets Allowed	Yes				
Interior		Exterior		Sizes	
Bedrooms	2	Garages	1	Floor Size	162m²
Bathrooms	2	Carports / Parkings	1		
Kitchens	1	Security	Yes		
Recep. Rooms	2	Pool	No		
Studies	1	Views	True		
Furnished	No				

