



Nick Hattingh
083 264 2457
nickh@dpg.co.za

Contact Klerksdorp

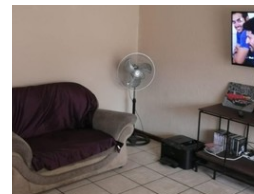
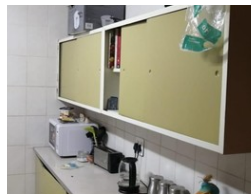
083 2642457

8 De Wet Street
Stilfontein
2551

UNDER OFFER



Web Ref DPG2754080



R330,000

🛏️ 2 🚿 1 🏠 1

Monthly Bond Repayment R3,406.22

Calculated over 20 years at 11% with no deposit.

Transfer Costs R16,346.00 **Bond Costs** R11,560.00

These calculations are only a guide. Please ask your conveyancer for exact calculations.

Monthly Levy R780

2 Bedroom townhouse

This 2 bedroom townhouse is situated close to Shell ultra city and the casino

Features

Pets Allowed	Yes		
Interior		Exterior	
Bedrooms	2	Garages	1
Bathrooms	1	Pool	No
Kitchens	1		
Recep. Rooms	1		

