



Isabel Lombard
0848304864
isabellombard@dpg.co.za



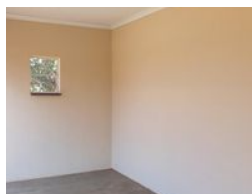
Ashley Bester
0832858013
ashleybester@dpg.co.za

Contact Meyerton
016 0042352

24 Glynn Street
Rothdene,
Meyerton,
1961



Web Ref DPR15434



R3,225,000

Monthly Bond Repayment R33,288.08
Calculated over 20 years at 11% with no deposit.

Transfer Costs R189,297.00 **Bond Costs** R45,955.00
These calculations are only a guide. Please ask your conveyancer for exact calculations.

3 1 2

Prime Agricultural Property

Discover a unique investment opportunity in one of the region's most prestigious agricultural areas. This exceptional property seamlessly blends rural charm with lucrative business potential, making it a versatile platform for agricultural and commercial ventures. At its heart is a charming entertainment venue designed to host up to 60 guests, ideal for intimate functions such as bachelorettes or high tea events. The venue is equipped with dedicated bathroom facilities, ensuring both comfort and convenience for your guests.

Currently operating as a successful petting zoo, the property features a delightful playground, an outdoor arena for shows, and a lapa for gatherings, making it a vibrant attraction for families and school field trips. Complementing these features is a well-appointed farm shop with an optional liquor...

Features

Pets Allowed	Yes		
Interior		Exterior	Sizes
Bedrooms	3	Garages	2
Bathrooms	1	Carports / Parkings	2
Kitchens	1	Security	Yes
Recep. Rooms	2	Dom. Accom.	1
Furnished	No	Pool	No
		Views	True
			Land Size 8Ha