

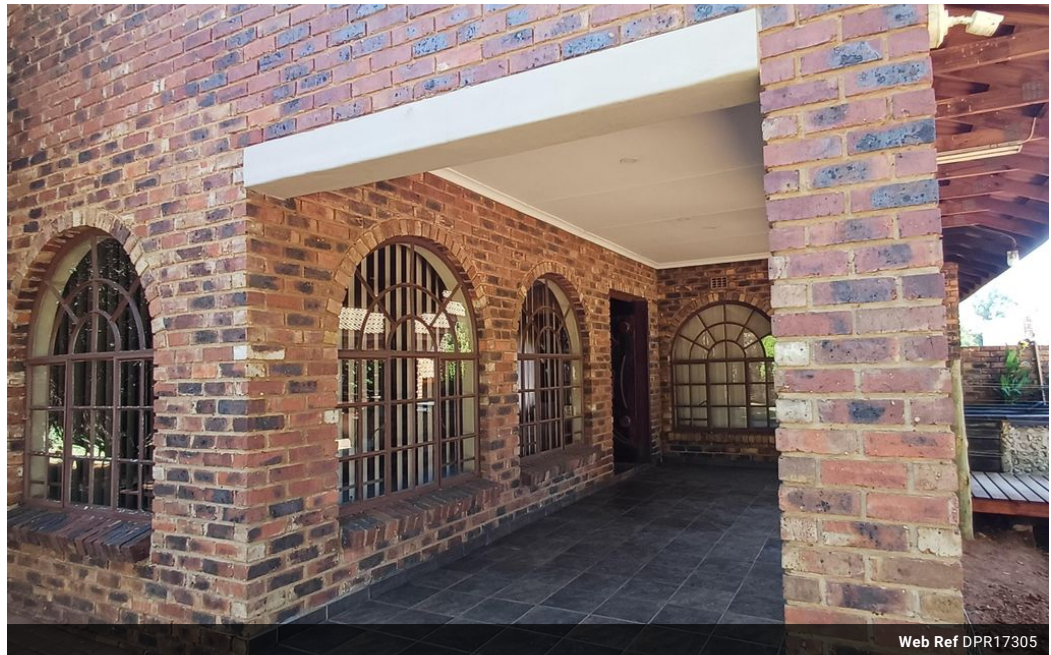


Isabel Lombard
0848304864
isabellombard@dpg.co.za

Contact Meyerton

016 0042352

24 Glynn Street
Rothdene,
Meyerton,
1961



Web Ref DPR17305



R2,900,000

4 3 2

Monthly Bond Repayment R29,933.46
Calculated over 20 years at 11% with no deposit.

Transfer Costs R152,055.00 **Bond Costs** R42,185.00
These calculations are only a guide. Please ask your conveyancer for exact calculations.

Monthly Rates R1,500

Exclusive 2.4 Ha Agricultural Property in Glen Donald

Located between Three Rivers and Meyerton in the sought-after suburb of Glen Donald, this expansive 2.4-hectare property offers a wealth of possibilities for those seeking space, luxury, and versatility. The home is designed with family living and entertaining in mind, featuring 4 massive sized bedrooms and 3 bathrooms, making it ideal for larger families. For those who enjoy hosting, the outdoor area is a standout. A large Lapa, situated next to the sparkling pool, is perfect for evening get-togethers. The Lapa comes complete with a built-in braai, bar, and a massive pool table, providing the ideal setting for relaxed social gatherings. And for those cold winter nights get together you can enjoy a warm visit in the boma area next to a warm fire.

The property is equipped with two boreholes, a full irrigation system, and a...

Features

Pets Allowed Yes

Interior
Bedrooms 4
Bathrooms 3
Kitchens 1
Recep. Rooms 2
Furnished No

Exterior
Garages 2
Carports / Parkings 10
Security Yes
Dom. Accom. 1
Pool Yes
Views False

Sizes
Land Size 2Ha