



**Isabel Lombard**  
0848304864  
isabellombard@dpg.co.za



**Ashley Bester**  
0832858013  
ashleybester@dpg.co.za



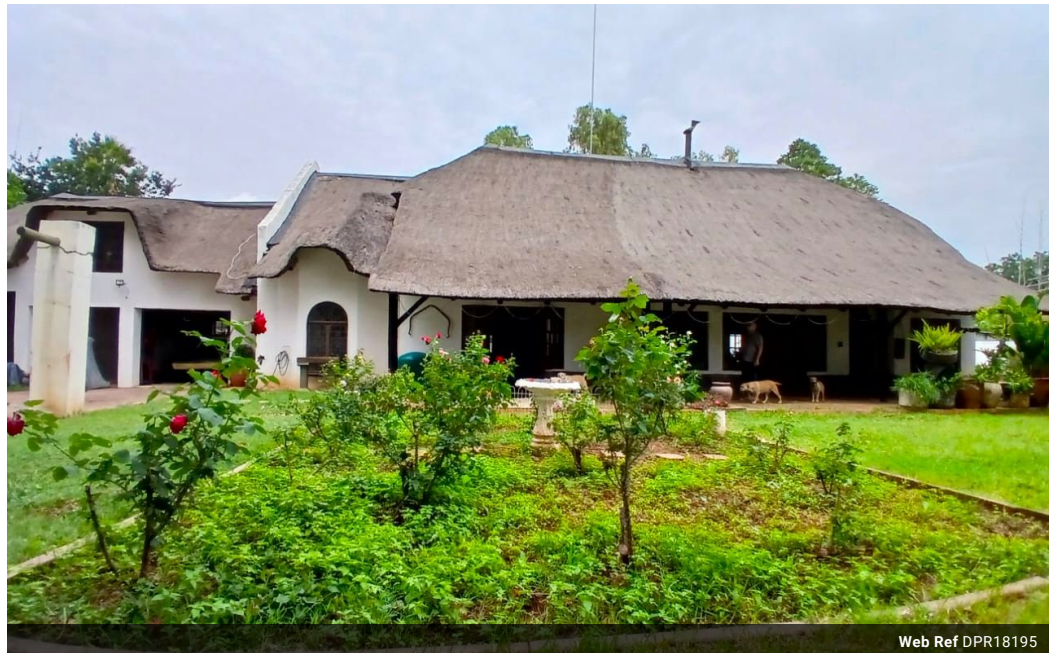
**Reghardt Van Staden**  
074 969 5973

reghardtvanstaden@dpg.co.za

Contact Meyerton

016 0042352

24 Glynn Street  
Rothdene,  
Meyerton,  
1961



Web Ref DPR18195



R3,100,000

🛏️ 4   🚿 2   🏠 3

**Monthly Bond Repayment** R31,997.84  
Calculated over 20 years at 11% with no deposit.

**Transfer Costs** R173,379.00   **Bond Costs** R44,070.00  
These calculations are only a guide. Please ask your conveyancer for exact calculations.

**Monthly Rates** R3,000

Massive family home in Henley on Klip

Located in the desirable neighbourhood of Henley on Klip, this expansive thatch home presents a unique blend of charm and functionality, making it an ideal residence for larger families. Boasting four well-appointed bedrooms, each equipped with a ceiling fan, the property includes two modern bathrooms, one of which is en-suite. The inviting open-plan design integrates the kitchen, lounge, and dining area, highlighted by exquisite teak flooring, wooden French doors, and stained glass windows that add a touch of elegance. The kitchen features ample cabinetry, a breakfast nook, and a butcher's block, while the cozy fireplace in the lounge provides warmth during cold winters. Additional amenities include three garages with motorized doors—one featuring a drive-through capability—equipped with a car hoist and a 300-liter compressor...

Features

<b>Pets Allowed</b>	Yes			
<b>Interior</b>		<b>Exterior</b>		<b>Sizes</b>
Bedrooms	4	Garages	3	Land Size
Bathrooms	2	Carports / Parkings	10	3,966m <sup>2</sup>
Kitchens	1	Security	Yes	
Recep. Rooms	2	Dom. Accom.	1	
Studies	1	Pool	Yes	
Furnished	No	Views	False	