



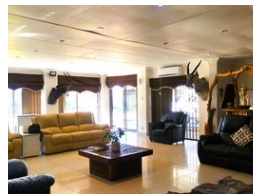
Quwen Saunders
0762868891
quwensauanders@dpg.co.za

Contact Meyerton
016 0042352

24 Glynn Street
Rothdene,
Meyerton,
1961



Web Ref DPR10141



R2,860,000

🛏 5 🚿 4 🚗 2

Monthly Bond Repayment R29,520.59
Calculated over 20 years at 11% with no deposit.

Transfer Costs R148,855.00 **Bond Costs** R42,185.00
These calculations are only a guide. Please ask your conveyancer for exact calculations.

Monthly Rates R1,200

BUSINESS, AGRICULTURAL, POSSIBILITIES ARE ENDLESS...

This small holding offers 21 680 square meter agriculture land and boasts with endless possibilities...The main house features a tiled interior that hosts an 80 square meter lounge and dining room with a built-in bar. This property was designed for residents that prefer large living areas and a spacious environment. The 50 square meters kitchen provide you with ample space, built-in cupboards, granite tops and a center island for convenience. A joint laundry with ample space than can accommodate 4 big top loaders and provides extra storage space. 5 Bedrooms and 4 bathrooms of which one is the guest bathroom and the other is en suite to the main bedroom. The main bedroom walks into another bedroom that can easily be converted into a huge 'His and Her's walk-in closet. The outside grounds includes an office building which is...

Features

Pets Allowed		Yes			
Interior		Exterior		Sizes	
Bedrooms	5	Garages	2	Land Size	21,414m ²
Bathrooms	4	Carports / Parkings	5		
Kitchens	1	Security	Yes		
Recep. Rooms	2	Dom. Accom.	1		
Studies	1	Pool	Yes		
Furnished	No	Views	False		

Extras

Office Outbuildings Storeroom Flatlet Air Conditioner Irrigation System Sprinkler System Staff Quarters Domestic Rooms Built In Braai Wendy House Built In Bar Borehole Alarm System Indoor Beams Outdoor Beams Closed Circuit TV Security Gate Laundry Water Tanks

