



Sandy Annandale
0833217850
sandyannandale@dpg.co.za

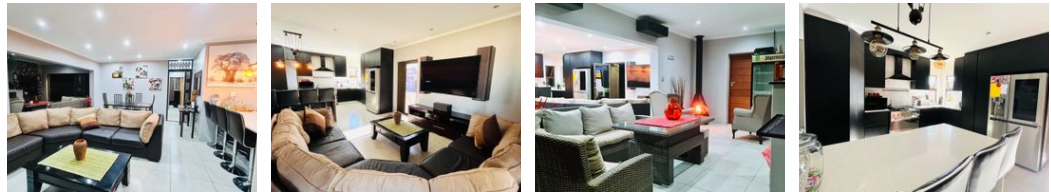
Contact Meyerton

016 0042352

24 Glynn Street
Rothdene,
Meyerton,
1961



Web Ref DPR10440



R1,950,000

3 Bedrooms 2 Bathrooms 2 Garages

Monthly Bond Repayment R20,127.67
Calculated over 20 years at 11% with no deposit.

Transfer Costs R72,206.00 **Bond Costs** R32,760.00

These calculations are only a guide. Please ask your conveyancer for exact calculations.

Monthly Levy R250 **Monthly Rates** R520

Welcome To The Prestigious Estate Life!

This full title home offers the perfect blend of luxury, comfort, and convenience. With 3 spacious bedrooms boasting built-in cupboards and stylish tiled flooring, you'll have plenty of room to unwind and relax. The 2 modern bathrooms are equipped with a basin, corner bathtub, and toilet, ensuring a refreshing and rejuvenating experience. The open plan layout seamlessly connects the lounge, dining area, and kitchen, creating a harmonious living space for you and your loved ones. Speaking of the kitchen, it comes fully equipped with a gas hob and oven, extractor fan, and a convenient scullery, preparing delicious meals will be an absolute pleasure. Entertaining guests will be a breeze in the indoor entertainment area, which boasts a built-in braai, a cozy fireplace, and even a built-in pizza oven. Gather around with friends and...

Features

Interior		Exterior		Sizes	
Bedrooms	3	Garages	2	Land Size	704m ²
Bathrooms	2	Security	No		
Kitchens	1	Pool	No		
Recep. Rooms	2	Views	False		
Furnished	No				