

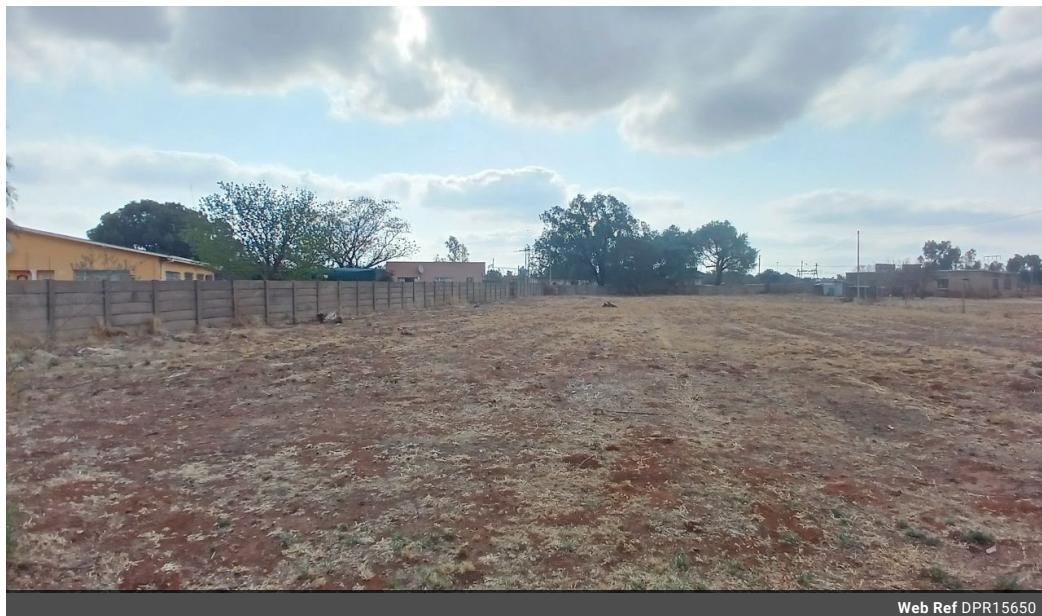


Divan Booyens
079 022 9922
divanbooyens@dpg.co.za

Contact Meyerton

016 0042352

24 Glynn Street
Rothdene,
Meyerton,
1961



Web Ref DPR15650



R370,000

Monthly Bond Repayment R3,819.10

Calculated over 20 years at 11% with no deposit.

Transfer Costs R16,806.00 **Bond Costs** R11,960.00

These calculations are only a guide. Please ask your conveyancer for exact calculations.

Monthly Rates R1,000

Large Vacant Stand Ideally Located!

Situated on a spacious 2286 square meters, this property offers ample room for building your dream home or investment property. Nestled in a developing area, the location provides the perfect opportunity for future growth and value appreciation.

Its proximity to essential amenities such as schools, shopping centers, and healthcare facilities ensures convenience for daily living while still offering the tranquility of a growing neighborhood. This expansive stand is ideal for those looking to create a custom home with plenty of space for outdoor living, gardens, or entertainment areas. Now is the time to make your dreams a reality and secure this prime piece of land in a promising location.

Features