



Isabel Lombard
0848304864
isabellombard@dpg.co.za



Ashley Bester
0832858013
ashleybester@dpg.co.za

Contact Meyerton

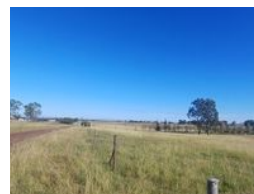
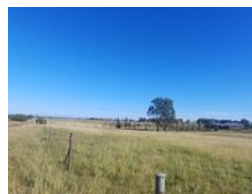
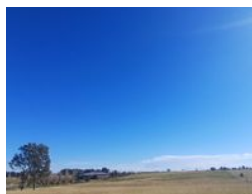
016 0042352

24 Glynn Street
Rothdene,
Meyerton,
1961

NEW



Web Ref DPR19030



R483,000

Monthly Bond Repayment R4,985.47

Calculated over 20 years at 11% with no deposit.

Transfer Costs R19,049.00 **Bond Costs** R13,910.00

These calculations are only a guide. Please ask your conveyancer for exact calculations.

Monthly Rates R485

Vacant Agricultural Stand in Nelsonia

We are delighted to present this exceptional 2.8-hectare agricultural stand located in the highly sought-after Nelsonia area of Meyerton. This flat, vacant land is perfectly suited for small-scale or mixed farming endeavors, as well as for those looking to escape to a peaceful rural lifestyle while still enjoying convenient access to essential amenities. The property is strategically situated just 15 minutes from Meyerton Central, Henley on Klip, and Vereeniging, with easy access to major roads such as the R42 and R59. Additionally, it is only an hour's drive from Johannesburg, making it an ideal choice for those seeking the perfect blend of serene countryside living and urban convenience.

This property offers numerous advantages, including the absence of dolomite testing requirements, which means you can develop with...

Features