



Patricia Bloem
0815281296
patriciab@dpg.co.za



Reghardt Van Staden
074 969 5973

reghardtvanstaden@dpg.co.za

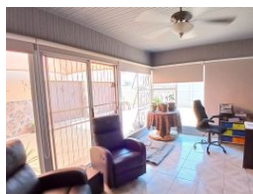
Contact **Meyerton**

016 0042352

24 Glynn Street
Rothdene,
Meyerton,
1961



Web Ref DPR17131



R2,120,000

3 2 2

Monthly Bond Repayment R21,882.39
Calculated over 20 years at 11% with no deposit.

Transfer Costs R85,147.00 **Bond Costs** R34,625.00

These calculations are only a guide. Please ask your conveyancer for exact calculations.

Monthly Rates R3,000

Plot for sale in Riversdale Meyerton.

This property is a rare find for the discerning investor, perfectly situated in the rapidly growing suburb of Riversdale, Midvaal. Spanning a total area of 8,865 sqm, it offers both immediate income potential and exciting development opportunities. The property features three well-maintained and spacious houses, occupying half the land, while a walled-off area of approximately 4,000 sqm awaits further development. With a strong borehole, JoJo tank, and a dam on-site, this property is equipped to support various ventures. Located on a tarred road in a peaceful street, it provides an ideal balance of convenience and tranquility.

The main house includes 3 bedrooms with built-in cupboards, a bathroom, an open-plan lounge and dining area, a spacious kitchen, an office, and ample parking with a double garage and two carports....

Features

Pets Allowed	Yes				
Interior		Exterior		Sizes	
Bedrooms	3	Garages	2	Land Size	8,865m ²
Bathrooms	2	Security	Yes		
Kitchens	1	Dom. Accom.	1		
Recep. Rooms	2	Pool	No		
Studies	1	Views	False		
Furnished	No				