



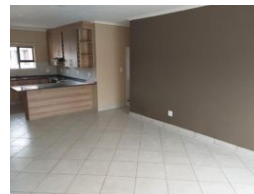
Sandy Annandale
0833217850
sandyannandale@dpg.co.za

Contact Meyerton
016 0042352

24 Glynn Street
Rothdene,
Meyerton,
1961



Web Ref DPR13885



R1,250,000

3 1 2

Monthly Bond Repayment R12,902.35
Calculated over 20 years at 11% with no deposit.

Transfer Costs R36,117.00 **Bond Costs** R27,105.00

These calculations are only a guide. Please ask your conveyancer for exact calculations.

Monthly Levy R850 **Monthly Rates** R1,100

3 Bdrm townhouse for sale in Riversdale.

This inviting property features three spacious bedrooms, including a main bedroom with an en-suite bathroom for added privacy and comfort. The home boasts two full bathrooms, ensuring convenience for family and guests alike.

The heart of the home is an open-plan lounge, dining, and kitchen area, designed with modern living in mind. The kitchen is equipped with elegant granite countertops, making it a delightful space for cooking and entertaining.

Step outside to your private garden, perfect for relaxation or outdoor activities. This pet-friendly property sits on a generous 600 sqm private stand within a secure complex, offering peace of mind and plenty of space for your furry friends.

Additional features include an individual water meter and pre-paid electricity, providing you with control over your utilities. A double...

Features

Pets Allowed	Yes				
Interior		Exterior		Sizes	
Bedrooms	3	Garages	2	Land Size	133m ²
Bathrooms	1	Security	Yes		
Kitchens	1	Pool	No		
Recep. Rooms	2	Views	False		
Furnished	No				
Extras					
Alarm System					