



Patricia Bloem
0815281296
patriciab@dpg.co.za



Reghardt Van Staden
074 969 5973

reghardtvanstaden@dpg.co.za

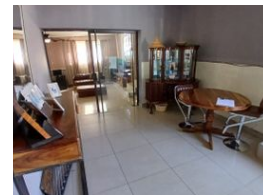
Contact Meyerton

016 0042352

24 Glynn Street
Rothdene,
Meyerton,
1961



Web Ref DPR13482



R1,200,000

Monthly Bond Repayment R12,386.26
Calculated over 20 years at 11% with no deposit.

Transfer Costs R32,749.00 **Bond Costs** R25,220.00

These calculations are only a guide. Please ask your conveyancer for exact calculations.

3 3 2

3 Bedroom home in Rothdene

Welcome to your future home! This spacious two-story property offers a perfect blend of comfort and versatility. The main house features 3 generously sized bedrooms on the upper floor, including a master bedroom with an en suite bathroom. Two additional modern bathrooms ensure convenience for all residents. The ground floor is designed for family living and entertaining, with an inviting living room, a spacious dining room, and a well-appointed kitchen with modern appliances and ample storage.

Adding to the home's versatility are two attached granny flats, each with its own private bathroom. These units offer complete independence and privacy, ideal for extended family, guests, or potential rental income. The seamless connection between the main living areas and the granny flats allows for flexible living arrangements while...

Features

Pets Allowed Yes

Interior
Bedrooms 3
Bathrooms 3
Kitchens 1
Recep. Rooms 2
Studies 1
Furnished No

Exterior
Garages 2
Security No
Pool No
Views False

Sizes
Land Size 1,663m²

Extras
Alarm System Double Storey