



Avesh Harichander
062 291 9112
aves.h@dpg.co.za

Contact Musgrave

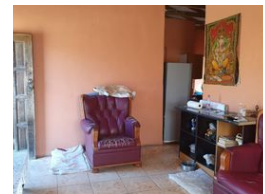
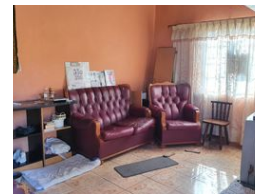
031 3165402

279 Problem Mkhize Road,
Essenwood,
Durban,
4001

FEATURED



Web Ref DPR13664



R700,000

3 2

Monthly Bond Repayment R7,225.32
Calculated over 20 years at 11% with no deposit.

Transfer Costs R23,730.00 **Bond Costs** R17,680.00
These calculations are only a guide. Please ask your conveyancer for exact calculations.

Monthly Rates R327.6

Phoenix investment opportunity: 2-level home for sale!

Dormehl Phalane Musgrave presents a unique investment opportunity – for sale is a two-level property in Phoenix. It offers two kitchens, two bathrooms and two lounges (one each, upstairs and downstairs) and can be shared by separate families if so desired, as it has two separate entrances.

The upstairs section of the house has a spacious layout with two bedrooms. The downstairs section has one bedroom.

The fully fenced property does require maintenance but offers endless possibilities for customisation and value addition. There is open parking for up to eight cars on this property.

The owner is open to negotiation, making this a good opportunity for investors, or those seeking a dual-living arrangement.

To schedule a viewing, or for more info, please contact Avesh.

Features

| Interior | | Exterior | | Sizes | |
|--------------|----|---------------------|-------|-----------|-------------------|
| Bedrooms | 3 | Carports / Parkings | 8 | Land Size | 675m ² |
| Bathrooms | 2 | Security | No | | |
| Kitchens | 2 | Pool | No | | |
| Recep. Rooms | 3 | Views | False | | |
| Furnished | No | | | | |

