



**Mervin Donnelly**  
061 696 8809  
mervin.d@dpg.co.za

Contact Head Office - Dormehl Lite

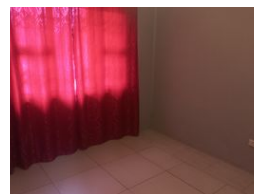
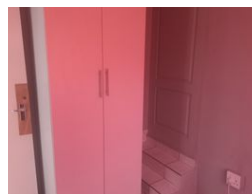
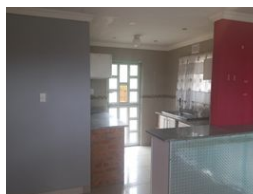
012 0000000

1170 Moulton Avenue  
Waverley  
0184

UNDER OFFER



Web Ref DPR845



**R1,600,000**

4   2

**Monthly Bond Repayment** R16,515.01  
Calculated over 20 years at 11% with no deposit.

**Transfer Costs** R48,785.00   **Bond Costs** R28,990.00  
These calculations are only a guide. Please ask your conveyancer for exact calculations.

Family home for sale in Phoenix!!!

Dormehl Phalane properties proudly presents this lovely family home for sale in Phoenix. This property consists of:  
currently used as an office  
high end modern finishes  
large stand for future extensions  
4 bedrooms  
fully fitted kitchen with granite tops  
family bathroom  
ample parkings

To view this property please contact Mervin Donnelly

**Features**

<b>Interior</b>		<b>Exterior</b>	
Bedrooms	4	Security	No
Bathrooms	2	Pool	No
Kitchens	1	Views	False
Recep. Rooms	1		
Furnished	No		