



Paul Cowley
072 010 4159
paulcowley@dpg.co.za

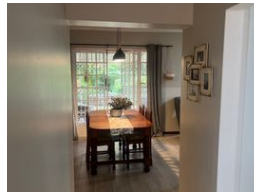
Contact Pietermaritzburg

033 3425129

Shop 6 Mayors Walk Centre, 86 Mayors Walk, Prestbury, Pietermaritzburg, 3208



Web Ref DPR18624



R1,395,000

3 3 1

Monthly Bond Repayment R14,399.03
Calculated over 20 years at 11% with no deposit.

Transfer Costs R40,467.00 **Bond Costs** R27,105.00

These calculations are only a guide. Please ask your conveyancer for exact calculations.

Monthly Levy R1,860 **Monthly Rates** R1,543

NEAT AND SPACIOUS CLARENDON DUPLEX

At the end of the driveway is this upmarket beauty in Villiers Drive, within the popular suburb of Clarendon!

Away from the gate, great views, small complex (6 units) and remote access.

Downstairs has fully tiled floors and features fitted kitchen with plenty of built-in cupboards and a gas/electric hob and oven. A serving counter to open-plan lounge and diningroom which leads to enclosed garden area. Bathroom with toilet and basin. A courtyard leads off the kitchen.

Upstairs has three carpeted bedrooms, all with built-in cupboards and ceiling fans. The main bedroom has a shower en suite and an airconditioner. The main bathroom has bath, hand shower, basin and toilet.

Outside, in front, is a single garage and open parking for another vehicle.

Close to schools and a short drive to shopping centres, CBD and N3.

Two small pets...

Features

Pets Allowed		Yes			
Interior		Exterior		Sizes	
Bedrooms	3	Garages	1	Floor Size	133m ²
Bathrooms	3	Carports / Parkings	2		
Kitchens	1	Security	No		
Recep. Rooms	2	Pool	No		
Furnished	No	Views	True		

