



**Andy Wade**  
074 624 0350  
andywade@dpg.co.za

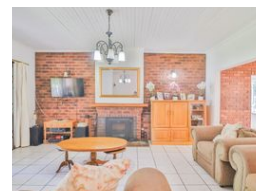
Contact Pietermaritzburg

033 3425129

Shop 6 Mayors Walk Centre, 86 Mayors Walk, Prestbury, Pietermaritzburg, 3208



Web Ref DPR4368



R2,600,000

4 2 2

**Monthly Bond Repayment** R26,836.90  
Calculated over 20 years at 11% with no deposit.

**Transfer Costs** R123,720.00    **Bond Costs** R38,415.00  
These calculations are only a guide. Please ask your conveyancer for exact calculations.

Prime Location: Exclusive House.Superb Price

Ferncliffe  
4 bedroom  
2 bathroom  
Garage with pit for motor mechanics plus a huge carport.  
Pool  
2 flatlets  
This exclusive home has 4 bedrooms and 2 bathrooms.  
Attached to the main house is a double and single flatlet.

It is a huge house with lots of space to work from home.

The main house has modern finishes.

The kitchen tap. has a five-star filtration system for the discerning buyer looking for a healthy lifestyle.  
There is a modern kitchen with bics and a gas stove.

One lounge has a fireplace for cold winter nights.

Features

<b>Pets Allowed</b>	Yes		
<b>Interior</b>		<b>Exterior</b>	
Bedrooms	4	Garages	2
Bathrooms	2	Carports / Parkings	3
Kitchens	1	Security	Yes
Recep. Rooms	2	Pool	Yes
Studies	1	Views	True
Furnished	Yes		

