

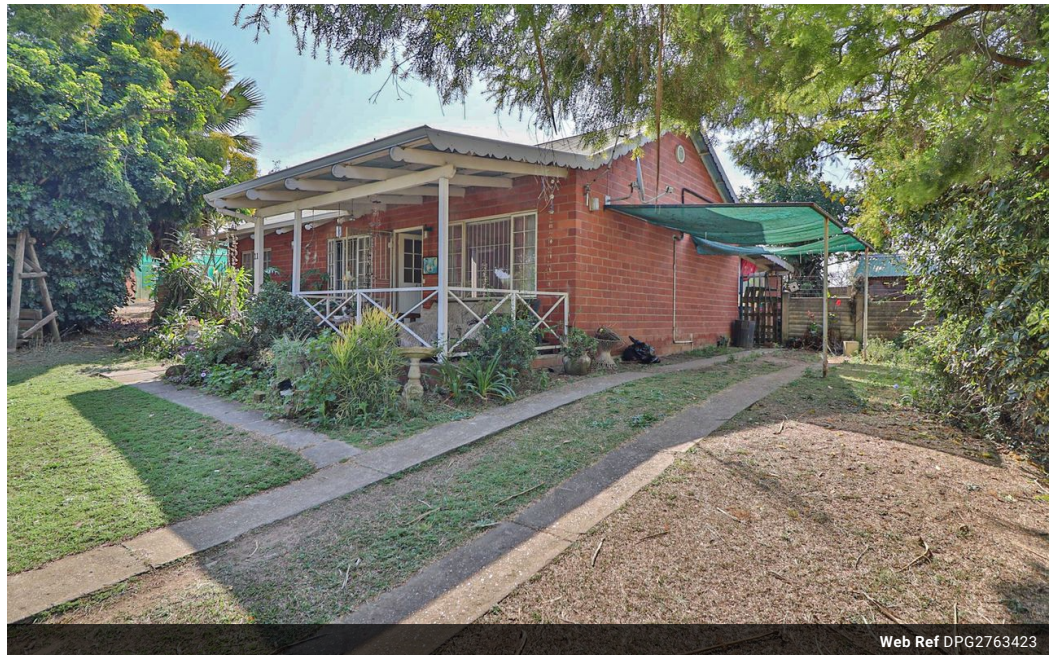


Piet Visser
081 521 7979
pietvisser@dpg.co.za

Contact Pietermaritzburg

033 3425129

Shop 6 Mayors Walk Centre, 86 Mayors Walk, Prestbury, Pietermaritzburg, 3208



Web Ref DPG2763423



R845,000

3 1

Monthly Bond Repayment R8,721.99
Calculated over 20 years at 11% with no deposit.

Transfer Costs R28,244.00 **Bond Costs** R21,450.00

These calculations are only a guide. Please ask your conveyancer for exact calculations.

Monthly Levy R1,861 **Monthly Rates** R695

Three bedroom premises ideal for young family or retired couple.

Three bedroomed unit in very popular sought after sectional complex in Lincoln Meade within 5 to 10 minutes travelling time to Pmb Central.

Dining room and lounge on open plan with front door entrance from 8,5 sq m front verandah to the lounge area.

The kitchen with built in cupboards and a service counter partition between the kitchen and dining room area. There are no stove or any other kitchen utilities in the kitchen.

3 Spacious bedrooms with built in cupboards and single bathroom/toilet

are all accessible from a passage from the lounge area. The whole units flooring was just redone with the carpeting being replaced with ceramic tile throughout the entire interior area of the unit.

The bathroom requires a revamp but was just repainted together with the rest of the units interior.

The back yard area is completely fenced...

Features

Pets Allowed Yes

Interior

Bedrooms	3
Bathrooms	1
Kitchens	1
Recep. Rooms	1.5
Furnished	No

Exterior

Carports / Parkings	1
Security	No
Pool	No
Views	False

Sizes

Floor Size	93m ²
Land Size	502m ²

Extras

Built-in Wardrobes Pets Allowed Private Garden Security Private Garden Air Conditioner Burglar Bars Carpets Cooling Fans Intercom Partially Fenced Totally Walled Veranda