



Hennie Strydom
082 447 9835
henniestrydom@dpg.co.za

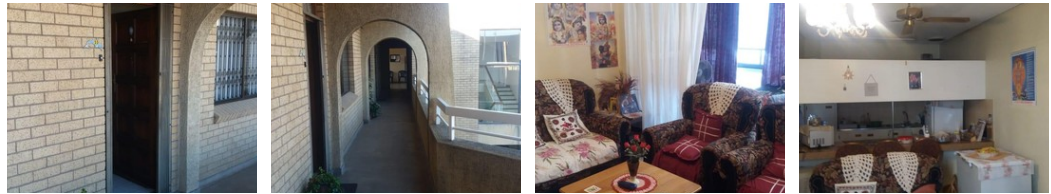
Contact Pietermaritzburg

033 3425129

Shop 6 Mayors Walk Centre, 86 Mayors Walk, Prestbury, Pietermaritzburg, 3208



Web Ref DRL2751571



R450,000



Monthly Bond Repayment R4,644.85
Calculated over 20 years at 11% with no deposit.

Transfer Costs R17,928.00 **Bond Costs** R12,935.00
These calculations are only a guide. Please ask your conveyancer for exact calculations.

Monthly Levy R2,600 **Monthly Rates** R400

Retirement Unit

Third floor unit in a secure and sought after complex. The unit consists of two bedrooms, bathroom with bath, basin and toilet, guest toilet. Kitchen and lounge. Meals are available on request, there is no frail care but a 24 hour nursing service is available. 24 Hour security. On taxi route. Close to all amenities.

Features

Interior		Exterior		Sizes	
Bedrooms	2	Security	Yes	Floor Size	74m ²
Bathrooms	1	Pool	No		
Kitchens	1	Views	False		
Recep. Rooms	2				
Furnished	No				